

Overview & Scrutiny

Children and Young People Scrutiny Commission

All Members of the Children & Young People Scrutiny Commission are requested to attend the meeting of the Commission to be held as follows

Monday 17 April 2023

7.00 pm

Council Chamber, Hackney Town Hall, Mare Street, London E8 1EA

The press and members of the public are welcome to join this meeting in person (noting the guidance below) or remotely via the following link:

<https://youtu.be/BjgqgNJJBK4>

A back up link is provided in case of technical difficulties:

<https://youtu.be/lfl7hNJxV2I>

Contact:

Martin Bradford (martin.bradford@hackney.gov.uk)

☎ 020 8356 3315

✉ martin.bradford@hackney.gov.uk

Mark Carroll

Chief Executive, London Borough of Hackney

Members: Cllr Sophie Conway (Chair), Cllr Margaret Gordon (Vice-Chair), Cllr Alastair Binnie-Lubbock, Cllr Lee Laudat-Scott, Cllr Midnight Ross, Cllr Caroline Selman, Cllr Anya Sizer, Cllr Sheila Suso-Runge, Cllr Lynne Troughton and Cllr Claudia Turbet-Delof

Co-optees: Richard Brown, Andy English, Salmah Kansara, Jo Macleod and Steven Olalere

Agenda

ALL MEETINGS ARE OPEN TO THE PUBLIC

- 1 Apologies for Absence**
- 2 Urgent Items / Order of Business**
- 3 Declarations of Interest**
- 4 Accessibility of CAMHS Services (19.05)** (Pages 9 - 38)
To review the accessibility of CAMHS in Hackney.
- 5 Cabinet Q & A (20.15)** (Pages 39 - 40)
To question Cllr Anntionette Bramble, Deputy Mayor and Cabinet Member for Education, Young People and Children's Social Care on policy areas within her service portfolio.
- 6 Unregistered Educational Settings (21.15)** (Pages 41 - 42)
To note the letter send to Secretary of State for Education as agreed by the Commission from 16/1/23.
- 7 Support to Young Parents (21.15)** (Pages 43 - 44)
To note the letter to Deputy Mayor and Cabinet Member for Education, Young People and Children's Social Care from the Commission setting out the outcomes of its work on Support for Young Parents.
- 8 Recruitment & Retention of Foster Carers (21.20)** (Pages 45 - 46)
To discuss the draft report and recommendations of the Commission's review into Recruitment and Retention of Foster Carers.
- 9 Work Programme - Year End Review (21.25)** (Pages 47 - 60)
To review the Commission's work programme for year end 2022/23.
- 10 Minutes of the Previous Meeting (21.35)** (Pages 61 - 76)
To approve the minutes of the meeting held on 20th March 2023.
- 11 Any Other Business**
To include updates on children and young people related issues from other scrutiny commissions

Access and Information

Public Involvement and Recording

Public Attendance at the Town Hall for Meetings

Scrutiny meetings are held in public, rather than being public meetings. This means that whilst residents and press are welcome to attend, they can only ask questions at the discretion of the Chair. For further information relating to public access to information, please see Part 4 of the council's constitution, available at <https://hackney.gov.uk/council-business> or by contacting Governance Services (020 8356 3503)

Following the lifting of all Covid-19 restrictions by the Government and the Council updating its assessment of access to its buildings, the Town Hall is now open to the public and members of the public may attend meetings of the Council.

We recognise, however, that you may find it more convenient to observe the meeting via the live-stream facility, the link for which appears on the agenda front sheet.

We would ask that if you have either tested positive for Covid-19 or have any symptoms that you do not attend the meeting, but rather use the livestream facility. If this applies and you are attending the meeting to ask a question, make a deputation or present a petition then you may contact the Officer named at the beginning of the agenda and they will be able to make arrangements for the Chair of the meeting to ask the question, make the deputation or present the petition on your behalf.

The Council will continue to ensure that access to our meetings is in line with any Covid-19 restrictions that may be in force from time to time and also in line with public health advice. The latest general advice can be found here - <https://hackney.gov.uk/coronavirus-support>

Rights of Press and Public to Report on Meetings

Where a meeting of the Council and its committees are open to the public, the press and public are welcome to report on meetings of the Council and its committees, through any audio, visual or written methods and may use digital and social media providing they do not disturb the conduct of the meeting and providing that the person reporting or providing the commentary is present at the meeting.

Those wishing to film, photograph or audio record a meeting are asked to notify the Council's Monitoring Officer by noon on the day of the meeting, if possible, or any time prior to the start of the meeting or notify the Chair at the

start of the meeting.

The Monitoring Officer, or the Chair of the meeting, may designate a set area from which all recording must take place at a meeting.

The Council will endeavour to provide reasonable space and seating to view, hear and record the meeting. If those intending to record a meeting require any other reasonable facilities, notice should be given to the Monitoring Officer in advance of the meeting and will only be provided if practicable to do so.

The Chair shall have discretion to regulate the behaviour of all those present recording a meeting in the interests of the efficient conduct of the meeting. Anyone acting in a disruptive manner may be required by the Chair to cease recording or may be excluded from the meeting.

Disruptive behaviour may include moving from any designated recording area; causing excessive noise; intrusive lighting; interrupting the meeting; or filming members of the public who have asked not to be filmed.

All those visually recording a meeting are requested to only focus on recording Councillors, officers and the public who are directly involved in the conduct of the meeting. The Chair of the meeting will ask any members of the public present if they have objections to being visually recorded. Those visually recording a meeting are asked to respect the wishes of those who do not wish to be filmed or photographed. Failure by someone recording a meeting to respect the wishes of those who do not wish to be filmed and photographed may result in the Chair instructing them to cease recording or in their exclusion from the meeting.

If a meeting passes a motion to exclude the press and public then in order to consider confidential or exempt information, all recording must cease, and all recording equipment must be removed from the meeting. The press and public are not permitted to use any means which might enable them to see or hear the proceedings whilst they are excluded from a meeting and confidential or exempt information is under consideration.

Providing oral commentary during a meeting is not permitted.

Advice to Members on Declaring Interests

Advice to Members on Declaring Interests

Hackney Council's Code of Conduct applies to all Members of the Council, the Mayor and co-opted Members.

This note is intended to provide general guidance for Members on declaring interests. However, you may need to obtain specific advice on whether you have an interest in a particular matter. If you need advice, you can contact:

- Director of Legal, Democratic and Electoral Services
- the Legal Adviser to the Committee; or
- Governance Services.

If at all possible, you should try to identify any potential interest you may have before the meeting so that you and the person you ask for advice can fully consider all the circumstances before reaching a conclusion on what action you should take.

You will have a disclosable pecuniary interest in a matter if it:

- i. relates to an interest that you have already registered in Parts A and C of the Register of Pecuniary Interests of you or your spouse/civil partner, or anyone living with you as if they were your spouse/civil partner;
- ii. relates to an interest that should be registered in Parts A and C of the Register of Pecuniary Interests of your spouse/civil partner, or anyone living with you as if they were your spouse/civil partner, but you have not yet done so; or
- iii. affects your well-being or financial position or that of your spouse/civil partner, or anyone living with you as if they were your spouse/civil partner.

If you have a disclosable pecuniary interest in an item on the agenda you must:

- i. Declare the existence and nature of the interest (in relation to the relevant agenda item) as soon as it becomes apparent to you (subject to the rules regarding sensitive interests).
- ii. You must leave the meeting when the item in which you have an interest is being discussed. You cannot stay in the meeting whilst discussion of the item takes place, and you cannot vote on the matter. In addition, you must not seek to improperly influence the decision.
- iii. If you have, however, obtained dispensation from the Monitoring Officer or Standards Committee you may remain in the meeting and participate in the

meeting. If dispensation has been granted it will stipulate the extent of your involvement, such as whether you can only be present to make representations, provide evidence or whether you are able to fully participate and vote on the matter in which you have a pecuniary interest.

Do you have any other non-pecuniary interest on any matter on the agenda which is being considered at the meeting?

You will have 'other non-pecuniary interest' in a matter if:

- i. It relates to an external body that you have been appointed to as a Member or in another capacity; or
- ii. It relates to an organisation or individual which you have actively engaged in supporting.

If you have other non-pecuniary interest in an item on the agenda you must:

- i. Declare the existence and nature of the interest (in relation to the relevant agenda item) as soon as it becomes apparent to you.
- ii. You may remain in the meeting, participate in any discussion or vote provided that contractual, financial, consent, permission or licence matters are not under consideration relating to the item in which you have an interest.
- iii. If you have an interest in a contractual, financial, consent, permission, or licence matter under consideration, you must leave the meeting unless you have obtained a dispensation from the Monitoring Officer or Standards Committee. You cannot stay in the meeting whilst discussion of the item takes place, and you cannot vote on the matter. In addition, you must not seek to improperly influence the decision. Where members of the public are allowed to make representations, or to give evidence or answer questions about the matter you may, with the permission of the meeting, speak on a matter then leave the meeting. Once you have finished making your representation, you must leave the meeting whilst the matter is being discussed.
- iv. If you have been granted dispensation, in accordance with the Council's dispensation procedure you may remain in the meeting. If dispensation has been granted it will stipulate the extent of your involvement, such as whether you can only be present to make representations, provide evidence or whether you are able to fully participate and vote on the matter in which you have a non-pecuniary interest.

Further Information

Advice can be obtained from Dawn Carter-McDonald, Director of Legal, Democratic and Electoral Services via email dawn.carter-mcdonald@hackney.gov.uk

Getting to the Town Hall

For a map of how to find the Town Hall, please visit the council's website <http://www.hackney.gov.uk/contact-us.htm> or contact the Overview and Scrutiny Officer using the details provided on the front cover of this agenda.

Accessibility

There are public toilets available, with wheelchair access, on the ground floor of the Town Hall.

Induction loop facilities are available in the Assembly Halls and the Council Chamber. Access for people with mobility difficulties can be obtained through the ramp on the side to the main Town Hall entrance.

Further Information about the Commission

If you would like any more information about the Scrutiny Commission, including the membership details, meeting dates and previous reviews, please visit the website or use this QR Code (accessible via phone or tablet 'app')

<http://www.hackney.gov.uk/individual-scrutiny-commissions-children-and-young-people.htm>



This page is intentionally left blank



<p>Children & Young People Scrutiny Commission</p> <p>March 20th 2023</p> <p>Item 4 - Accessibility of CAMHS in Hackney</p>	<p>Item No</p> <p>4</p>
--	--------------------------------

Outline

In March 2022, the Commission assessed the accessibility of local CAMHS through the Cabinet Q and A process. At this meeting the Commission noted the acute pressures which services were under which had resulted in lengthy waiting times for children to be assessed and to receive therapeutic support. The Commission agreed to follow up this work in greater detail within the 2022/23 work programme.

The Commission therefore requested an update from local CAMHS on the accessibility of local services to include:

- Overview of service demand, waiting times and compliance with accessibility standards;
- Update on the development of a single point of access (no wrong front door) across the CAMHS alliance;
- Access to therapeutic services and who are waiting for therapeutic support;
- Demographic analysis of disproportionalities in those children and young people seeking help from CAMHS;
- Governance and oversight of CAMHS alliance - structures that oversee service demands, waiting times and the broader implementation of local priorities.

To support this item the Commission has:

- 1) Undertaken site visits to First Steps, Specialist CAMHS and Off-Centre
- 2) Held a focus group with mental health practitioners from First Steps, Specialist CAMHS and Off-Centre and CAMHS Alliance.

Report

- Children and Young People's Emotional Wellbeing and Mental Health in City & Hackney
-

Attending for this item:

Nadia Sica, Integrated Commissioning Transformation Programme Manager
Children, Young People, Maternity and Families, City and Hackney Integrated Care Partnership

Sophie Mcelroy, Senior Programme Manager, City & Hackney Children & Young People's Emotional Health and Wellbeing Partnership/CAMHS Alliance/Hackney Education

Greg Condon, Programme Manager, Mental Health, Health & Care Board

This page is intentionally left blank

Report Title:	Children and Young People's Emotional Wellbeing and Mental Health in City and Hackney
Meeting for:	Children & Young People Scrutiny Commission
Date of meeting:	17th April 2023
Produced by:	Sophie McElroy, Senior Programme Manager, City & Hackney Children & Young People's Emotional Health and Wellbeing Partnership/CAMHS Alliance/Hackney Education Greg Condon, Programme Manager, Mental Health, NHS North East London Integrated Care Board
Authorised by:	Nadia Sica, Integrated Commissioning Transformation Programme Manager acting into Director for the Children, Young People, Maternity and Families Workstream, London Borough of Hackney/City of London/NHS NEL Integrated Care Board

Report Summary

The Children and Young People's Emotional Wellbeing and Mental Health in City and Hackney report has been produced by the Children, Young People, Maternity and Families Integrated Commissioning (CYPMF) Workstream of the City and Hackney Place Based Partnership. It has been produced with the support of the local Child and Adolescent Mental Health Services (CAMHS) Alliance.

The workstream is integrated, being made up of local authority and NHS commissioners, and is tasked with driving the development of a place-based integrated model for the planning and delivery of Health, Social Care and well-being services to improve outcomes for our young residents and their families.

The report pertains to a key priority for the CYPMF workstream; emotional wellbeing and mental health. This is both a local and national priority. The report focuses on the following key areas:

- Local and national context
- Local governance
- Key metrics around CAMHS service delivery

In addition to the information contained in this report, the Commission has undertaken a series of site visits to local service providers and a focus group with CAMHS service leads as part of the wider field work on this agenda.

Action

The Commission is requested to review and comment on the attached report considering findings and insight gathered during site visits and the focus group help.

This page is intentionally left blank



Homerton Healthcare
NHS Foundation Trust



Children and Young People's Emotional Wellbeing and Mental Health in City & Hackney
CYP Scrutiny Commission Report
April 2023



Local and National Context

- The emotional wellbeing and mental health of City and Hackney children, young people and their families continues to be a key priority for system partners, as part of our integrated system-wide work.
- The national drive to prioritise the emotional wellbeing and mental health of children, young people and their families remains strong; the Five Year Forward View for Mental Health and the NHS Long Term Plan (LTP) prioritise CYP and family mental health and ensure that we, as a place-based partnership, are aspiring for parity of esteem and aiming to balance the impact of social and health inequalities and local need whilst achieving the LTP ambitions.
- Local systems are required to produce a publicly available CAMHS Transformation Plan for Children and Young People's Mental Health and Wellbeing that sets out how we intend to achieve the vision of all children and young people receiving the right support at the right time around their mental health.

Our 0-25 City and Hackney Emotional Health and Wellbeing Partnership supports the delivery of the NEL-wide Transformation Plan as well as having responsibility for overseeing the delivery of our City and Hackney [Integrated Children and Young People's Emotional Health and Wellbeing Strategy \(2021-2026\)](#); we are two years into its delivery. A review of performance against the strategy and associated action plan is currently underway.

- Post-Covid, the partnership continues to address system-wide challenges around demand and capacity with specific workstreams in place around neurodevelopmental pathways and investment in surge response.
- The merging of the seven CCGs in North East London (NEL) in 2022 to form the NHS NEL Integrated Care Board (ICB) has presented local partners with the opportunity to take stock of the challenges experienced over the last few years and plan responses through transformation of our services and innovative ways of working.
- The scope of transformation required necessitates all partners and service users to work together and while COVID-19 has been devastating for many, it has boosted integration, capability, opportunity and motivation placing NEL partners in the right circumstances to embrace change.
- As part of this structural change, the CAMHS Alliance, a collaborative made up of local organisations delivering services to support an improvement in emotional wellbeing and mental health outcomes, has formally come together with a view to increasing integration of services at place level. The Alliance has formalised responsibilities to work in partnership with one another, as well as wider partners from Health, Education and Social Care, to jointly deliver services, programmes and projects that align with system priorities.
- The City and Hackney Children, Young People, Maternity and Families (CYPMF) Integrated (LBH, City of London and NHS NEL ICB) Commissioning Workstream is tasked with driving forward the emotional wellbeing and mental health agenda. Workstream and wider mental health governance arrangements are set out on the following slides.

City & Hackney Place Based Partnership CYPMF Governance

City & Hackney Health and Care Partnership Board

Neighbourhoods Health & Care Board

City & Hackney Place Based Delivery Group

CYPMF Health and Wellbeing Strategic Partnership

NEL Babies, Children and Young People governance

C&H Safeguarding Children Partnership

CoL Children and Young People's Partnership

C&H CYP Provider Forum

Page 15
-25 Emotional Health & Wellbeing Partnership

Maternity Partnership Board

CYPMF Business Performance Oversight Group

CYPMF Neighbourhoods Steering Group

CAMHS Alliance

YBM MH workstream

6 Subgroups

Programme Delivery Groups

Childhood Adversity, Trauma & Resilience

System Influencers

Asylum Seeker and Refugee Health Planning

Task & Finish Groups

CYP Immunisations & Vaccinations

CYP Polio Vaccinations

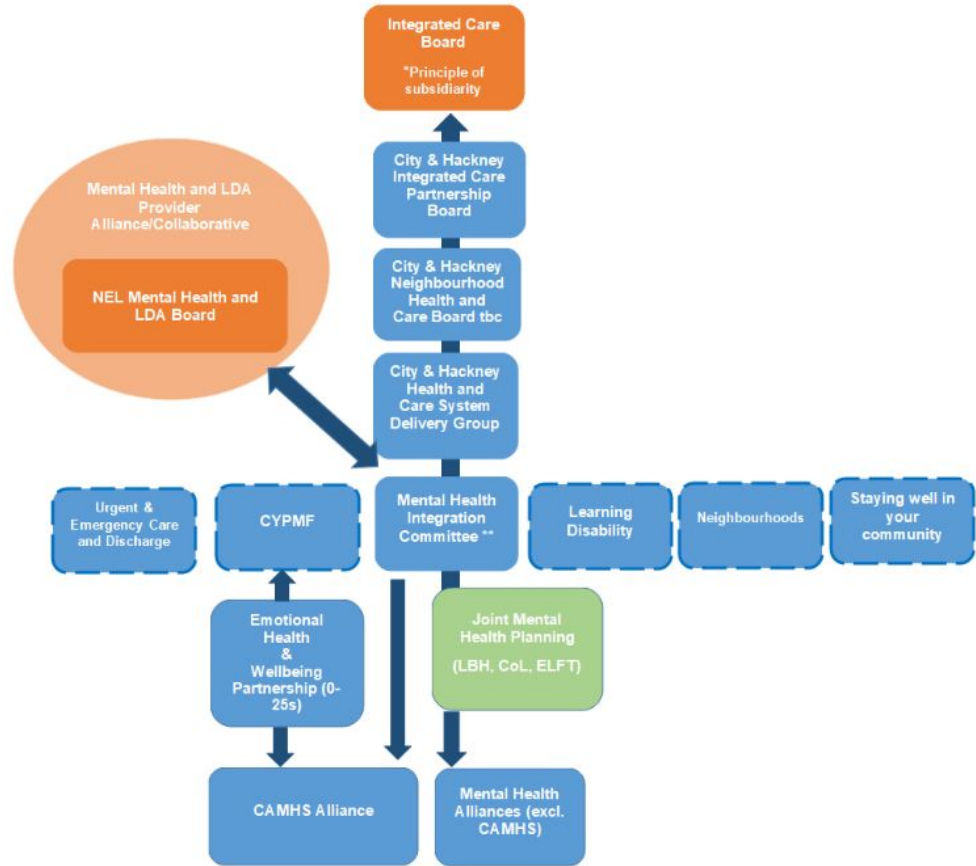
Working groups

C&H SEND governance

C&H Children and Education Governance

City and Hackney Place-based and NHS NEL Level Mental Health Governance

Page 16



*The principle that a central authority should have a subsidiary function, performing only those tasks which cannot be performed at a more local level.

**Formally Mental Health Coordinating Committee

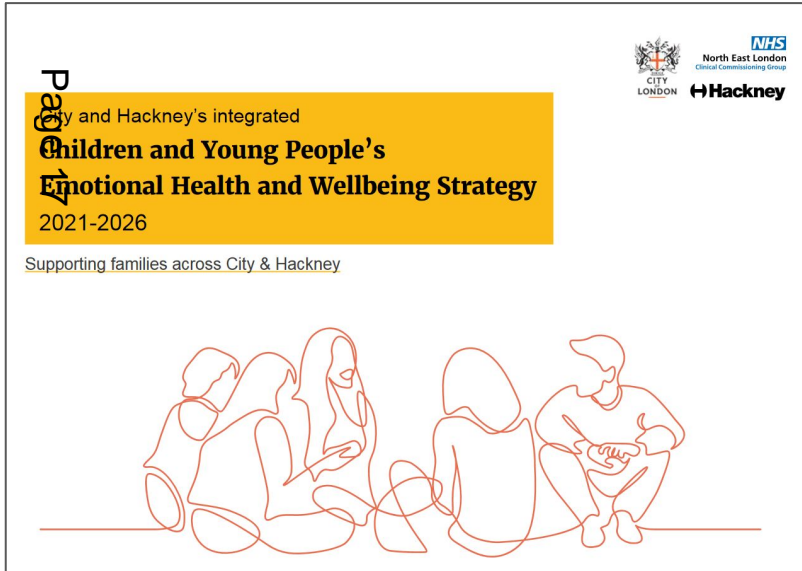
ORANGE: NEL DIRECTED TRANSFORMATION AREAS
BLUE: CITY AND HACKNEY PLACE BASED
TRANSFORMATION AREAS

City and Hackney's Integrated Children and Young People's Emotional Health and Wellbeing Strategy

The CYP Emotional Health and Wellbeing Strategy was ratified in 2021. Its delivery is supported and overseen by the Emotional Health and Wellbeing Partnership, which is made up of local authority, health, community and voluntary sector organisations. The Strategy will be updated in the summer/autumn of 2023, including a refreshed action plan.

Key Principles

1. *Build awareness and work preventatively*
2. *Identify needs and intervene early*
3. *Understand and respond to local need to ensure that service design is influenced by young people, families, caregivers and frontline practitioners*
4. *Take a life course approach from conception to adulthood to deliver equitable access, effective interventions and managed transitions*
5. *Make the best of resources in a collaborative integrated system*



Whole System Priorities (Emotional Health & Wellbeing Partnership)

CAMHS Single Point of Access (SPA)

Development of a Single Point of Access to all NHS CAMHS Services, launched in November 2022. Offering a simplified referral process - all referrals are sent to one service (SPA) using one referral form, one email address and one phone number - a centralised point of contact - to get advice about a possible referral, find out more information about an active referral and all communications coming from one place - and improved response time between referral and allocation to services, avoiding delays and referrals bouncing between services.

Eating Disorders

Workforce Development: Upskilling universal and targeted early help practitioners, expand the scope of the Mental Health Support Team (in schools) to deliver wellbeing promotion groups; planning underway in conjunction with CEDS to provide 2 workshops to early intervention professionals. Improved access through implementation of SPA. Upskilling of GPs through training on GP Intranet and CPD sessions, including information on updated referral process.

Parent Support: Signposting by CEDS for referral to Social Services where appropriate, or help with accessing DLA and PIP. Ongoing effort to set up parent peer support. VCSOs are offering parent training and coaching - resources available through *Beat*: <https://www.beateatingdisorders.org.uk/>

Schools and Communities: Parent/carer forums in place at Stoke Newington School, with vision to expand to other schools. Clear communication; pathways provided to schools for signposting and referrals. Training available through *Beat* has been shared with school staff.

Service Deployment: Work in progress with CEDS to set up a Virtual Early Help Hub (online platform) to inform parents/carers and young people of locally available support and services. Work in progress on *Young Person's Voice*, as a mechanism for collecting feedback from service users and peers.

Whole System Priorities (Emotional Health & Wellbeing Partnership)

LGBTQI+

Joint action plan being developed across the system within the EHWP, using the Aspirations within the Council's Strategic framework. Commitment to recurrently sustain Project Indigo from 2023, and develop new enhanced offer for LGBTQI+ and their families. Review of internal processes (including data collection, accessibility, intersectionality and staff training requirements within services and organisations but also across them).

Crisis

Reduce the burden of the number of children and young people presenting at A&E in crisis that do not require an emergency medical assessment. A pathway to divert to appropriate alternative community crisis mental health support either before attending A&E or divert when they attend. Develop a simple flow chart of where to go/call and when, Train partner agencies in the new crisis diversion (in particular schools and GPs).

Review funding allocation and clinical pathways for admission avoidance/placement breakdown services - Surge (Clinical Service at LBN), ICCS (Intensive Community Crisis Service), Tier 3.5 Intensive Support for CYP with LD/ASD (primarily crisis prevention, limited capacity to take on cyp in crisis) and the Adolescent Mental Health Service ELFT. Clinical Service, HUH and ELFT all have specialist areas of expertise to improve outcomes for CYP in acute crisis but the services are currently not fully configured in a way to effectively and safely meet this need. Review funding allocation and clinical pathways for targeted groups of cyp known to be at risk of mental health crisis and/or placement breakdown eg CYP with LD/ASD, also CYP who are on the edge of care/LAC.

ND Pathways

City and Hackney have a number of services across 2 different trusts who are commissioned to offer assessments and intervention for neurodevelopmental conditions. Since COVID-19 there has been a number of issues affecting the pathway, including backlogs created by COVID, increase in demand, vacancies and recruitment difficulties. The current context has evidenced the need to review the Neurodevelopmental Pathways across services in order to determine the Demand & capacity balance in the system and put in place remedial actions to ensure the pathway model can meet the demand in the most effective way. Work is planned to start in April 2023 and last 3 months.

Prevention & Early Intervention (examples)

Reach & Resilience

The CAMHS Alliance established the Reach and Resilience workstream in 2015 with the goal of developing strong links with different communities in City and Hackney and ensure that CAMHS services are truly accessible and culturally relevant for all residents. The overarching aim is to increase awareness, accessibility and resources in relation to child mental health in identified communities where health inequalities exist. The engagement processes has followed a 4 stage processes which has proved successful already in working with some of the larger community groups in City and Hackney (i.e. Orthodox Jewish, Turkish speaking and African and Caribbean Heritage Communities)

Stage 1: Identify and engage key community leaders/workers and collaborate with each community to understand what will fit in terms of delivery for their young people and families.

Stage 2: Establish a programme of workshops/training/consultation in relation to children's mental health that is culturally specific and is delivered in the communities' context.

Stage 3: Establish culturally specific evidenced based groups/interventions within the community.

Stage 4: Develop skills within community groups that are self-sustaining.

WAMHS / MHST

The Wellbeing and Mental Health in Schools (WAMHS) service takes a whole school approach to improving mental health and wellbeing support for children and young people in schools, colleges, specialist and alternative provision education settings in City & Hackney. MHST (Mental Health Support Team) supports this work by offering early intervention groups to individuals, groups of children and parents in approximately 55% of schools.

WAMHS focuses on building & developing knowledge and skills in education staff so that they are more confident and feel more able to support students, and their families, who may be experiencing emerging or identified mental health difficulties. Working with a senior member of school staff, a skilled education professional from Hackney Education supports each school and education setting to review their current wellbeing and mental health provision and develop an action plan across a number of areas to improve the support systems for mental health and wellbeing in school. A mental health professional (CAMHS worker) is deployed to work in around 70% of school settings, supporting the action plan for between 1 & 4 days a month. WAMHS also has a range of universal offers available to all schools.

Tree of Life in Schools

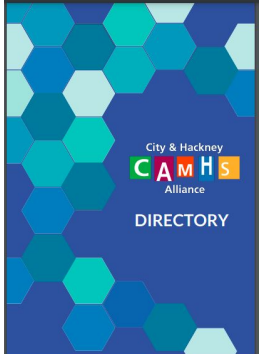
The Tree of Life in Schools programme, currently in its second year of pilot, offers Peer led Tree of Life intervention to young people from African, Caribbean and mixed heritage (ACH) in secondary schools in City and Hackney.

Tree of Life is a **strengths-based narrative** approach intervention delivered by trained Peer Leaders from African, Caribbean and dual heritage and supported by Education Mental Health practitioners in school.

The **aim** of the programme is to give space to young people from ACH backgrounds to believe in their own abilities, acknowledge their dreams and talk about difficult experiences in a safe environment. This programme takes a **non-clinical approach** to working with young people with no identified or low-level emotional wellbeing needs (such as anxiety/mood, issues making friends and issues with identity).

Findings from the evaluation of the first year of pilot show overwhelmingly good feedback from students who attended the programme, with outcomes showing increases in their willingness and ability to express themselves in front of others, self-confidence, knowledge and pride in their background, roots and culture, feelings of usefulness and optimism about the future.

City & Hackney CAMHS Alliance Services

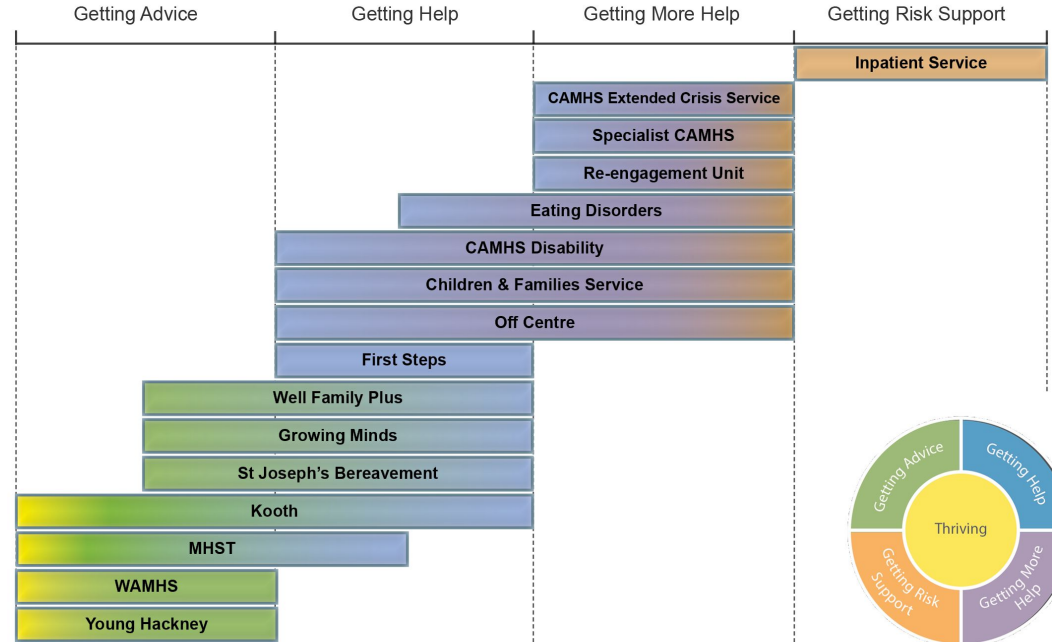


[CAMHS Directory](#)

The CAMHS Alliance includes all these provider organisations across health, local authority, and community and voluntary sectors. The CAMHS Alliance directory (linked above) gives full details of each service, including the pathway to access.

i-Thrive

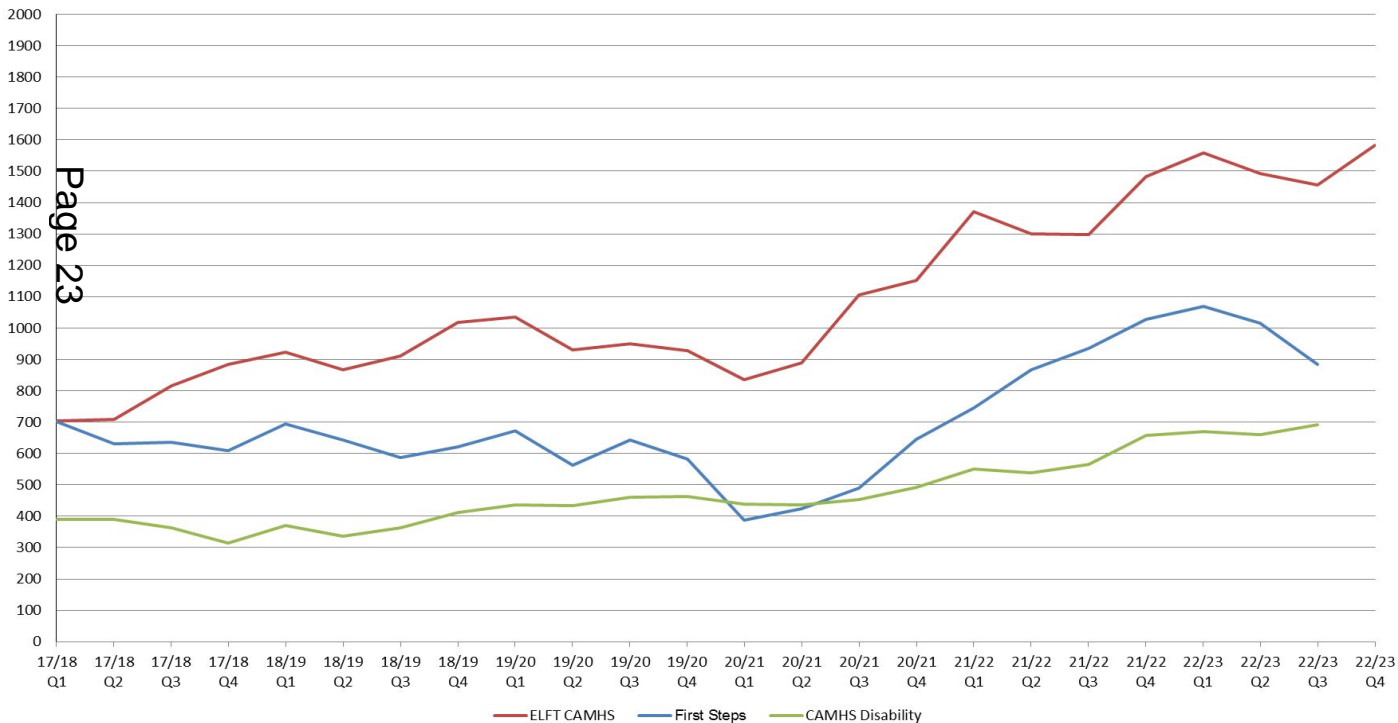
- One of the ambitions of the local CAMHS Transformation Plan is to work with system partners to develop an i-Thrive-like approach to service delivery.
- This model aims to move away from a purely 'medical model' of service delivery to minimise the risk of unmet need in the system.
- The aim is to meet the full range of needs from universal (thriving) to crisis (getting risk support).
- Services here are mapped against this model.
- When we take this i-Thrive approach, we also recognise that all of us can fluctuate in our needs across time, and that we may need access to varying levels of service and types of support.
- Taking a step-up and step-down (or agile) approach aims to ensure that users can access the appropriate service(s) at the right time.



NHS CAMHS Total Caseload (open) – 2017/18 Q1 – 2022/23 Q3

This graph shows open cases for the three NHS CAMH services (Specialist CAMHS, First Steps and CAMHS Disability). “Open” indicates cases which are open to the service but may have a varying level or amount of input, from weekly appointments (or daily in case of crisis management) to six weekly check-ins. Cases can be held open for a range of reasons e.g. awaiting appropriate service for step-down or ongoing medication review.

All Services



Graph indicates a post-Covid-19 Pandemic rise in caseload for all CAMHS Alliance services, with implementation of SPA in November 2022 seeing gradual reduction in referrals to First Steps for the last Quarter of 2021/22 – more signposting to community and local initiatives.

Increase in caseload would also suggest increase in complexity of cases, as such young people are staying in services for longer.

Specialist CAMHS (ELFT):
70% increase in caseload since Q4 2019/20
(928 □ 1582 patients)

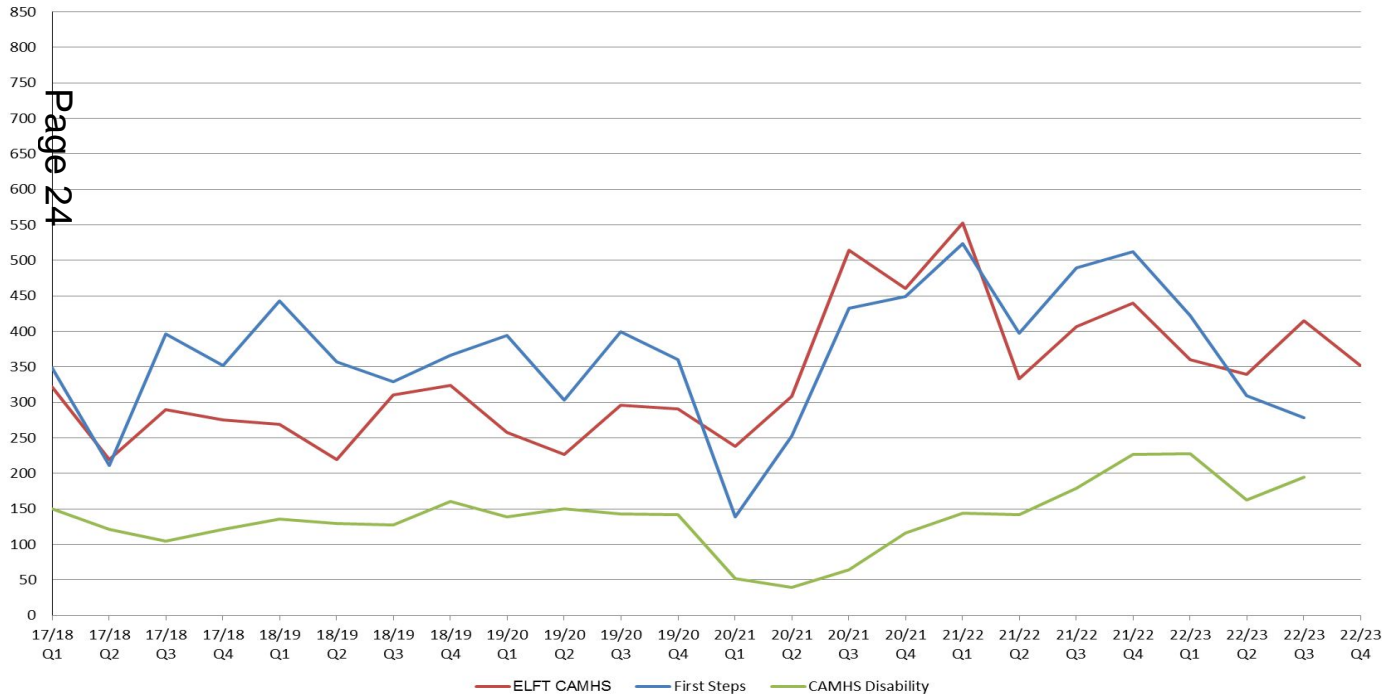
First Steps:
51% increase in caseload since Q4 2019/20
(583 □ 883 patients)

CAMHS Disability:
49% increase in caseload since Q4 2019/20
(463 □ 692 patients)

NHS CAMHS Referrals Accepted – 2017/18 Q1 – 2022/23 Q3

This graph shows the number of referrals accepted for each of the three NHS CAMHS services. The next slide shows referrals received vs accepted.

All Services



First Steps referrals *received* have dropped by 49% since Q4 2021/22.

Referrals Received:
554 □ 282 (49% decrease)

Referrals Accepted:
512 □ 278 (45% decrease)

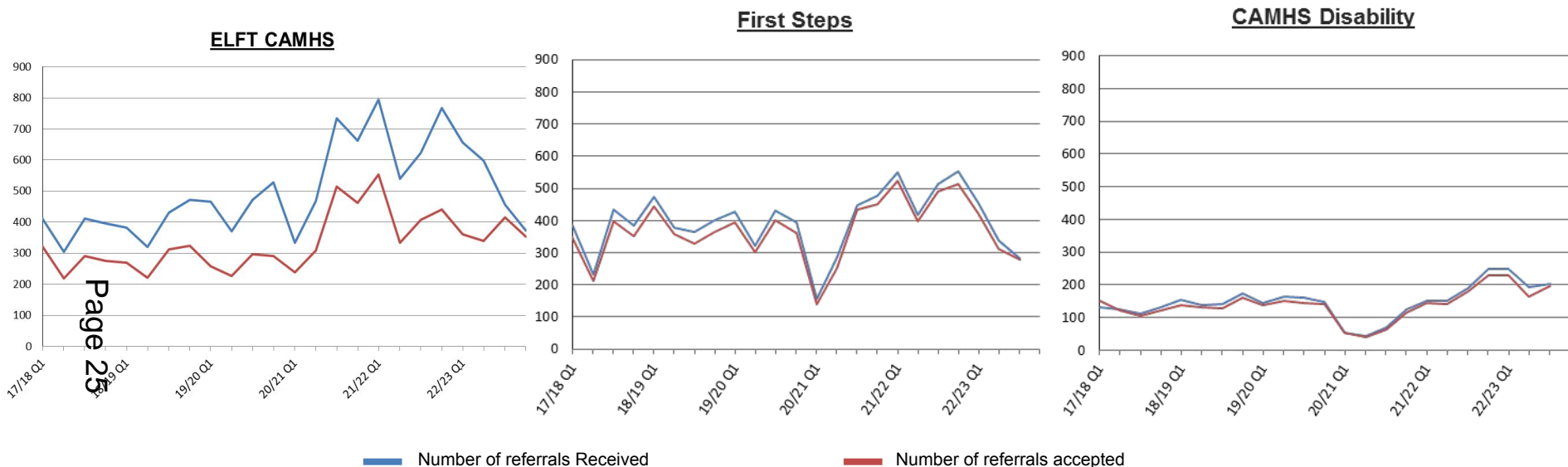
Percentage difference indicated fewer referrals are being rejected.

Increased case complexity may explain rise in referrals to Specialist CAMHS and CAMHS Disability since before Covid-19, and subsequent reduction in referrals to First Steps.

This also reflects the increase in caseload numbers, with fewer patients staying in services for longer.

Page 24

NHS CAMHS Referrals Received vs Referrals Accepted – 2017/18 Q1 – 2022/23 Q3



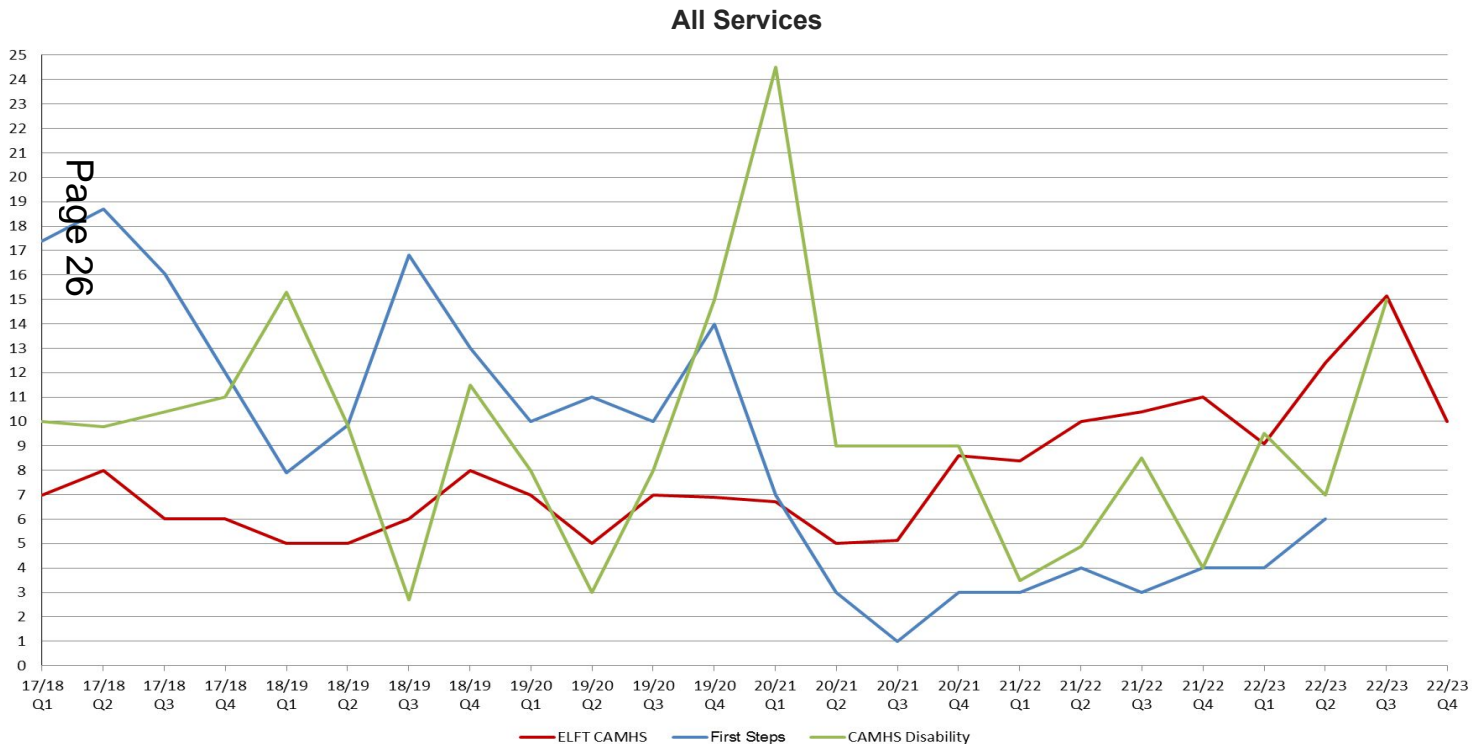
Here, we see referrals received vs referrals accepted. With the introduction of Single Point of Access in November 2022, the latest Quarter reported for First Steps and CAMHS Disability shows minimal referrals rejected. This trajectory will continue into the future, with proposed improvements to staffing of SPA referral triage.

Data from Q2 2022/23 going forwards will show all referrals going to a service being accepted, due to the change of referral system (technically all referrals made are accepted by SPA). This metric will eventually become redundant, and is being shown here to illustrate historic trends.

Some reasons why a referral may not be accepted are that it is not the right service for the presenting needs of the child or young person. In this instance, the case is passed to the appropriate service (within the CAMHS Alliance or outside). With the launch of the Single Point of Access, this reduces the need to transfer a referral if between NHS services.

NHS CAMHS Median Wait times from Referral to Treatment (weeks) – 2017/18 Q1 – 2022/23 Q3

This graph shows wait times for point of referral to treatment. The steps this includes are i) referral received, ii) referral triaged, iii) referral accepted, declined or transferred to another provider, iv) initial assessment, v) case allocated or closed (for a range of reasons e.g. family/child decline the offer) and, vi) treatment begins.



First Steps median wait times have dropped over time, from 17.4 weeks (2017/18 Q1) to 6 weeks (2022/23 Q2).

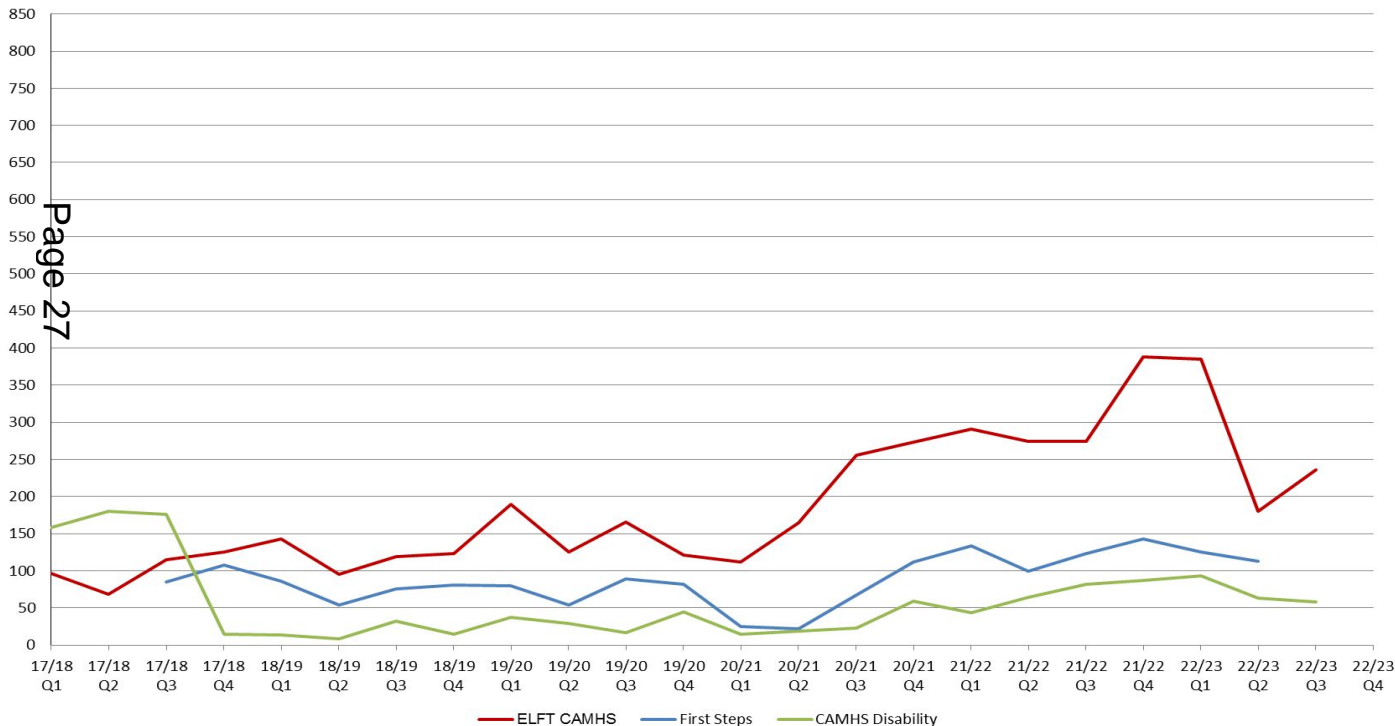
Specialist CAMHS wait times have gradually increased to 10 weeks (2022/23 Q4), and CAMHS Disability to 15 weeks (2022/23 Q3).

Above results are likely an indication of the increase in complexity of cases being referred and accepted to services, and reduction in referrals of low/moderate risk cases. Fewer patients directed to First Steps, with SPA redirecting to community and local initiatives.

NHS CAMHS Number of Patients Awaiting Assessment – 2017/18 Q1 – 2022/23 Q3

This graph shows the numbers of cases between stage iii (referral accepted, declined or transferred to another provider) and iv (initial assessment)

All Services



With a steady increase in caseload since the beginning of the Covid-19 Pandemic, number of young people awaiting assessment has reflected this and increased gradually for First Steps and CAMHS Disability.

Uptick in referrals received to ELFT CAMHS is reflected respectively in number of YP awaiting assessment.

First Steps:

38% increase since Q4 2019/20 (82 □ 113)

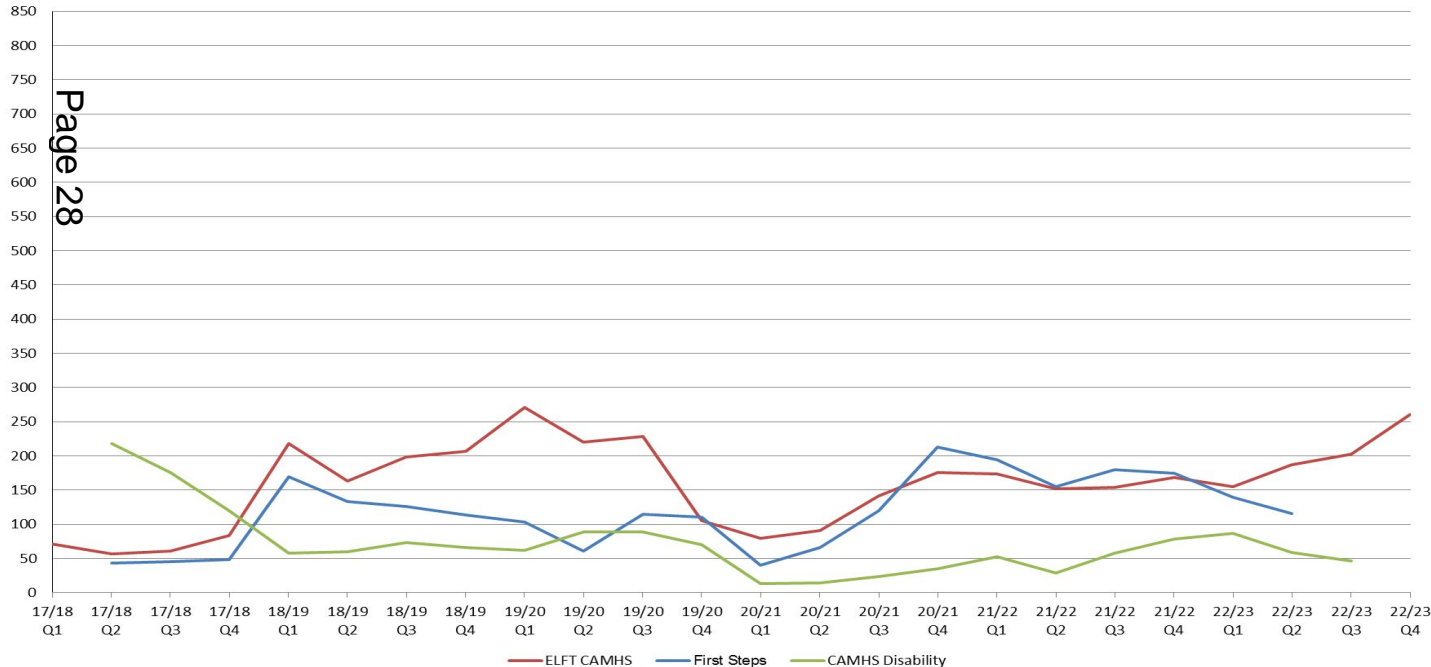
CAMHS Disability:

29% increase since Q4 2019/20 (45 □ 58)

NHS CAMHS Numbers Had Assessment, Awaiting Treatment – 2017/18 Q1 – 2022/23 Q3

This graph shows the number of cases between stage iv (initial assessment) and vi (treatment begins)

All Services



ELFT CAMHS:

148% increase since Q4 2019/20
(105 □ 261)

First Steps:

5% increase since Q4 2019/20
(111 □ 116)

CAMHS Disability:

% decrease since Q4 2019/20
(70 □ 46)

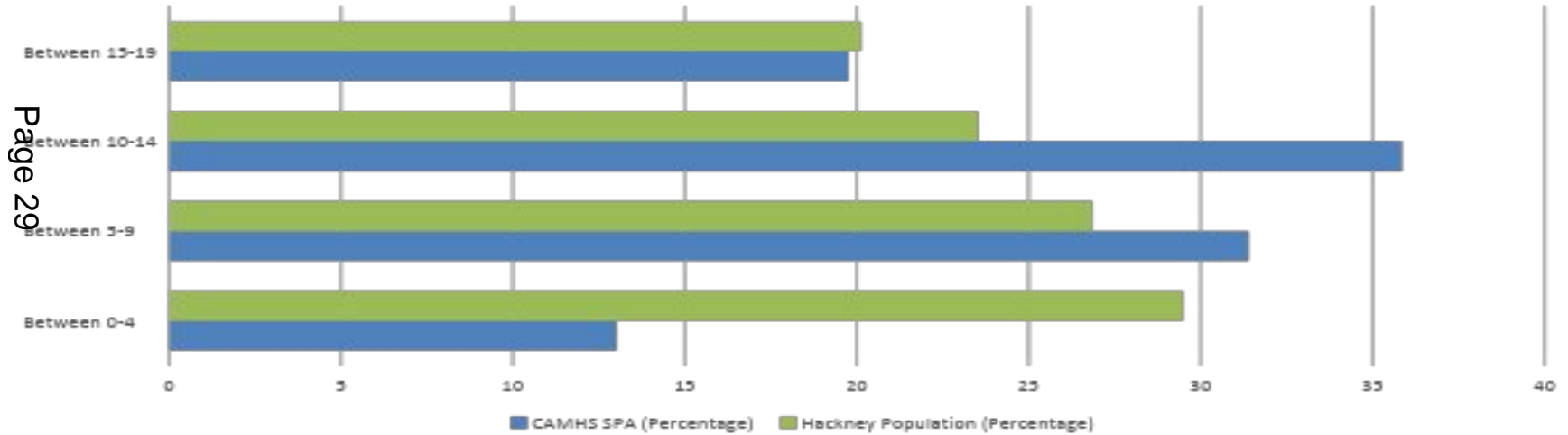
Pairing this with previous statistics for total caseloads and number of referral accepted, suggests that following the Covid-19 Pandemic, cases being dealt with are overall more complex than previously.

Increased complexity may also explain rise in referrals to Specialist CAMHS, and subsequent reduction in referrals to First Steps.

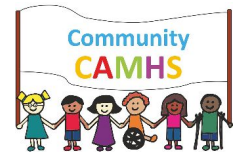
Age Demographics

CAMHS SPA Referrals Nov 22-Feb 23 (1099 Children & Young People)

Total Population of Hackney Nov 22-Feb 23 (68,930 Children & Young People-Hackney Census 2021)



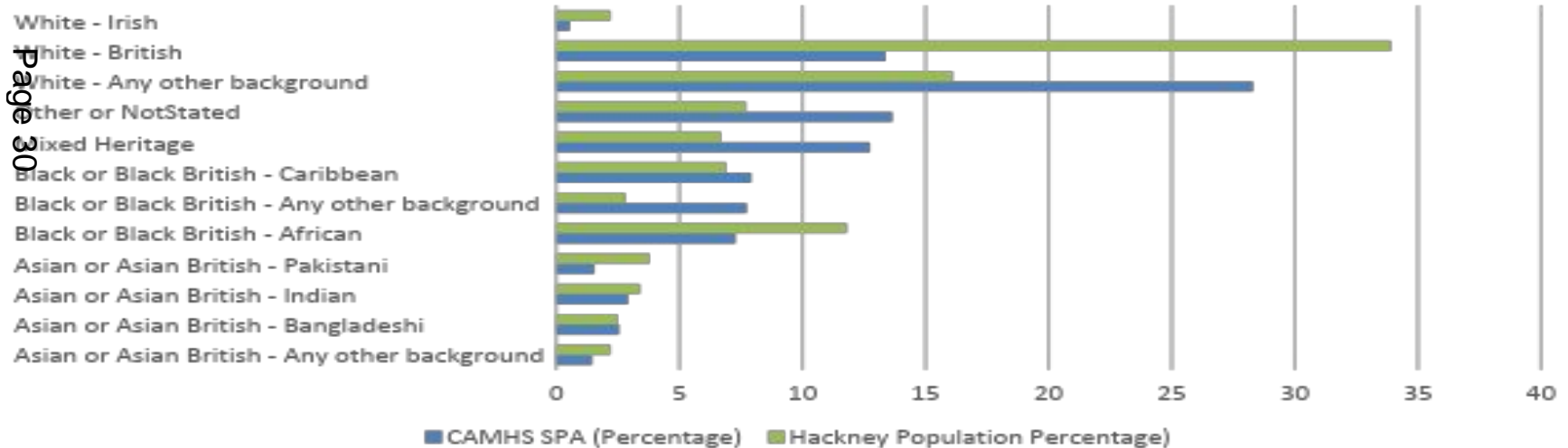
This graph provides information about the ages of children being referred to NHS CAMH services through the Single Point of Access (since November 2022)



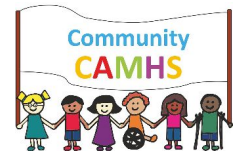
Ethnicity Demographics

CAMHS SPA Referrals Nov 22-Feb 23 (1099 Children & Young People)

Total Population of Hackney Nov 22-Feb 23 (Estimated 259,200 Total Population -Hackney Census 2021)



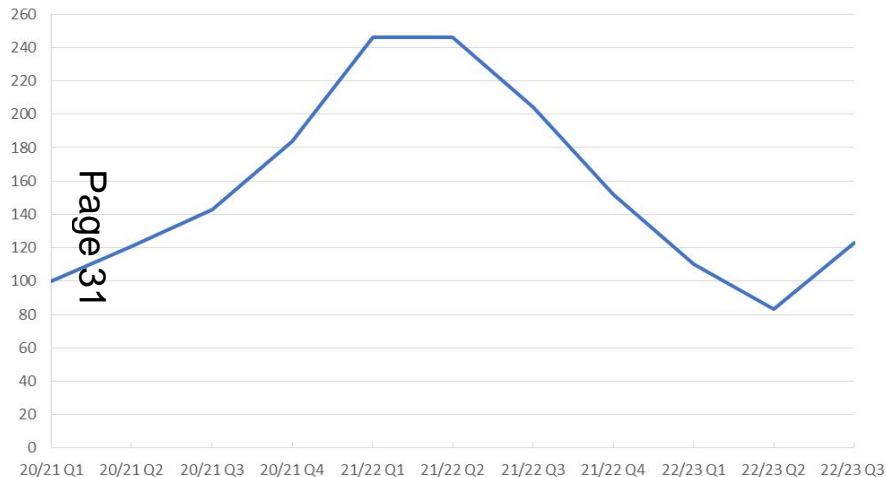
This graph shows ethnicity data relating to the referrals made into the Single Point of Access (since November 2022).



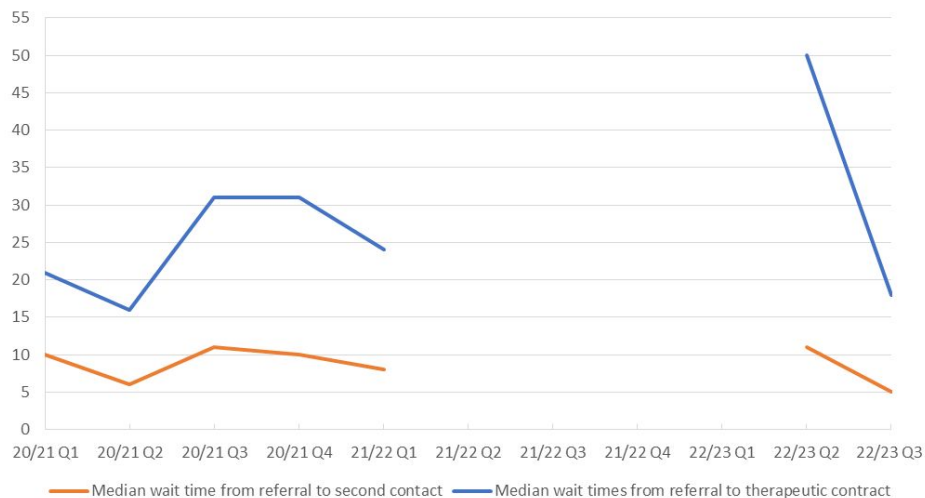
Off Centre

The graphs below show the total number of cases open and median wait times between Q1 2020/21 - Q3 2022/23 for the service provider Off Centre

Total Caseload (open) - Q1 20/21 - Q3 22/23



Median wait times (weeks) - Q1 20/21 - Q3 22/23



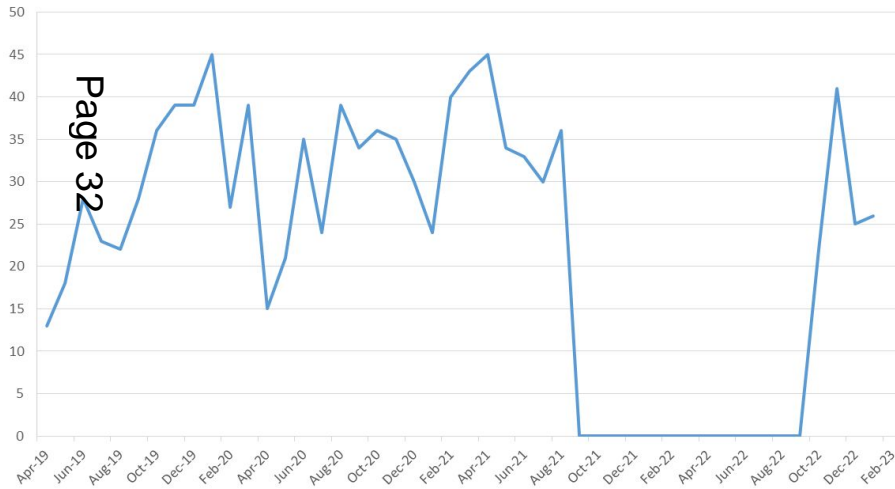
Note that Off Centre was closed to new referrals between September 2021 and September 2022, hence the absence of wait times data for this period.

Off Centre (16-25 voluntary sector service) made the difficult decision to close to new referrals for one year. This was due to a range of factors including the challenges of managing high levels of risk (this has now been resolved by a risk-sharing approach with Neighbourhood teams), overwhelming numbers of referrals, and vacancies within the service.

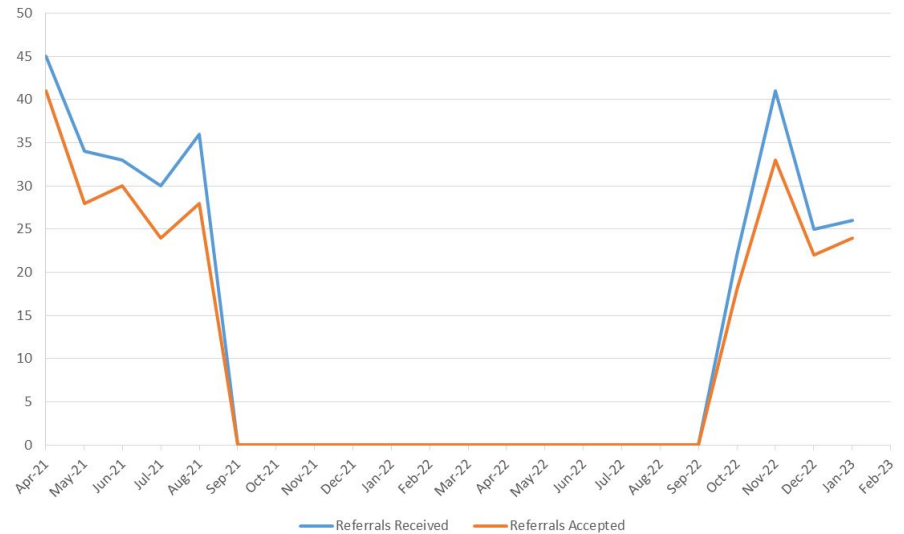
Off Centre

In the graph below on the left, we see the total number of referrals made between April 2019 - February 2023. On the right, are the referrals made vs referrals received for the same time period.

Referrals Received - April 2019 - February 2023



Referrals Received vs Referrals Accepted - April 2021 - January 2023

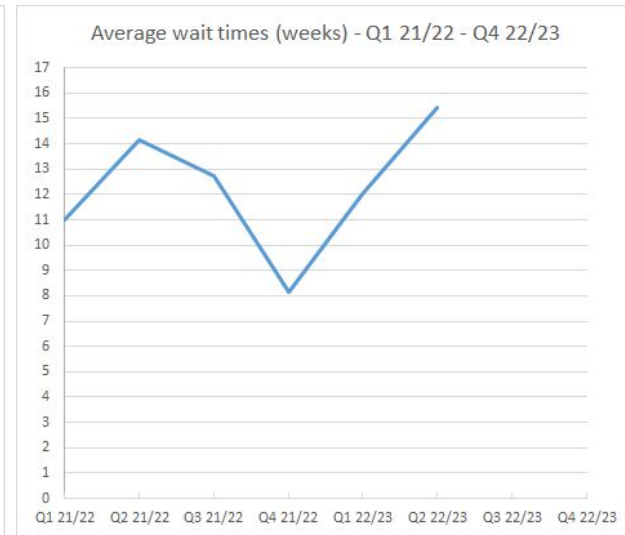
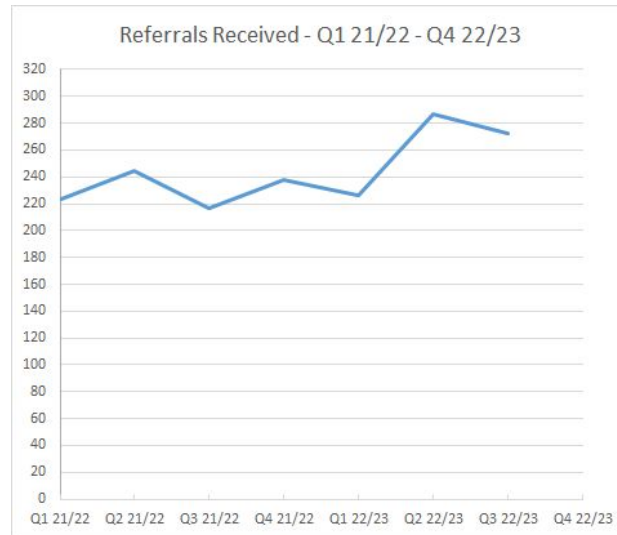
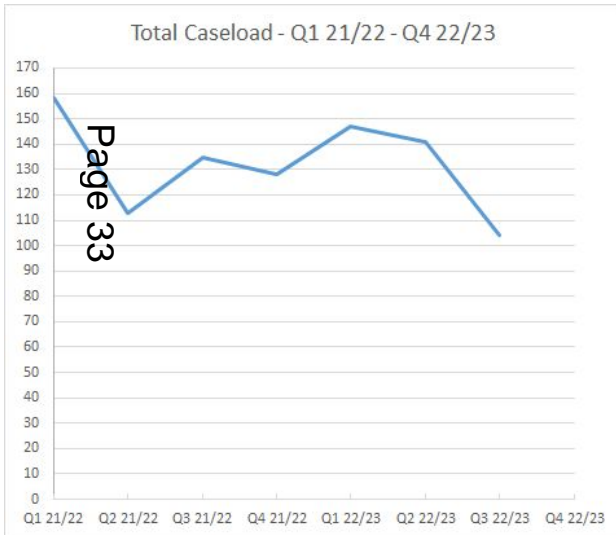


Note that Off Centre was closed to new referrals between September 2021 and September 2022, hence drop to zero for Referrals received/accepted during this period.

Clinical Team (Children and Families Service)

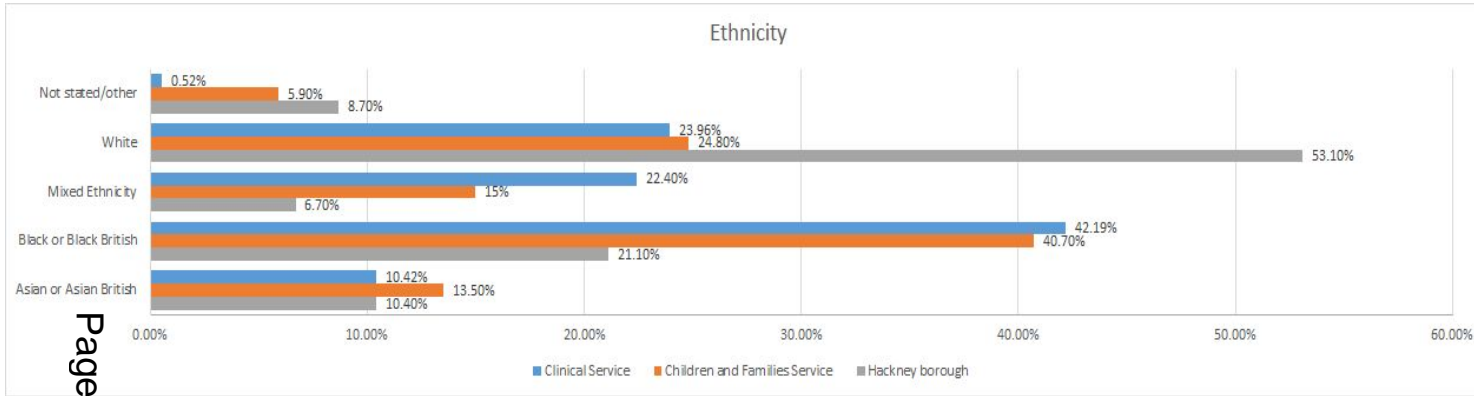
The Clinical Team is the in-house London Borough of Hackney CAMH service for Children's Social Care. It works with children on a Child Protection Plan, Child in Need Plan, Looked after Children and those in the Youth Justice cohort.

Below are data showing total caseloads, number of referrals received and average waiting times to be seen by the service covering the period Q1 2021/22 - Q3 2022/23.

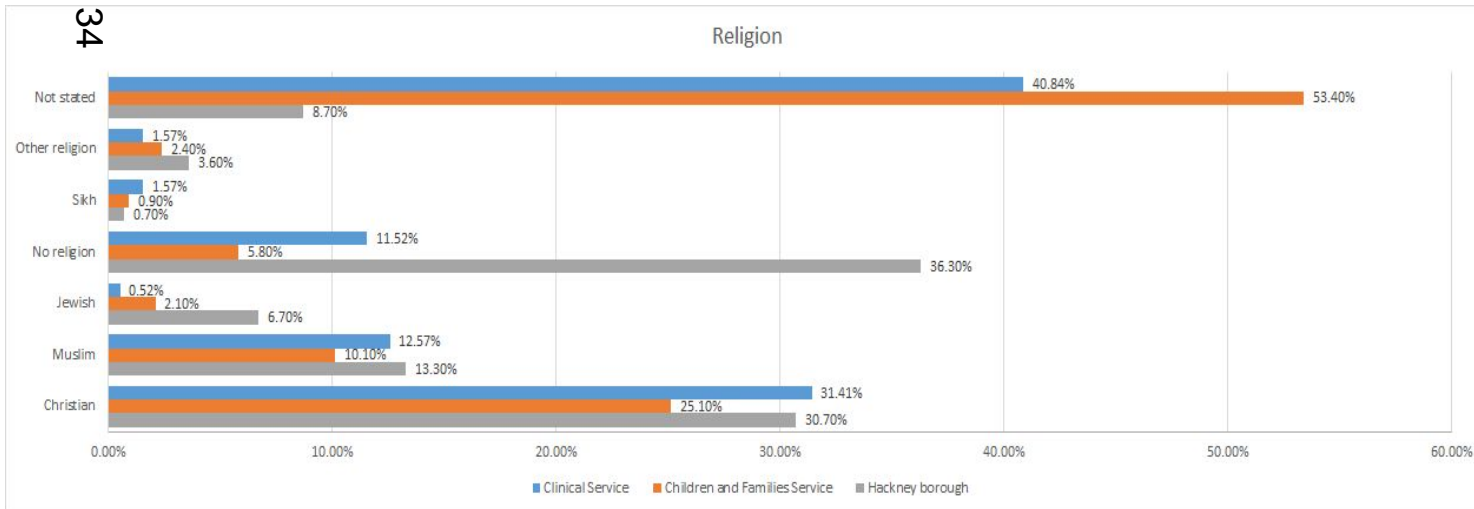


Note that data is missing for the reporting period before 2021/22 due to a cyber attack at CFS.

Clinical Team Demographics data



Page 34



This slide shows the access proportions by ethnicity and religion of children and young people open to the Clinical Service and Children's Social Care against the overall City and Hackney CYP population.

City and Hackney Spend Summary 2020/21 - 2022/23

Below is a snapshot of direct spend on mental health treatment services in City and Hackney for 2020/21 and 2022/23. Services include both NHS and VCS organisations commissioned to deliver locally.

Transformation funds (non-recurrent) are presented separately in the final rows.

LOCAL SPEND		
Service	Spend 2020/21	Spend 2022/23
Specialist CAMHS (ELFT)	£4,571,678.00	£4,374,250.00
CAMHS Disability (including autism pathway (HUH))	£551,141.00	£555,858.00
First Steps (HUH)	£1,181,283.00	£1,356,417.00
Family Action Well Family Service	£285,000.00	£285,000.00
TOTAL:	£6,589,102.00	£6,571,525.00
TOTAL TRANSFORMATIONAL SPEND	Spend 2020/21	Spend 2022/23
	£4,267,247.00	£2,182,328.00

National Spotlight for CAMHS



A 2022 report by the Children's Commissioner, **Children's Mental Health Services 2020/21**, judged City and Hackney's mental health service provision **6th best in the country**. Key indicators used to determine this include:

- CCG spend on children's mental health as a percentage of total CCG allocation
- Mental health spend per child - calculated using NHS Five Year Forward View for Mental Health spending figures and ONS mid 2020 CCG population estimates
- Total number of children referred to children's mental health services as a proportion of the under-18 population
- The percentage of referrals that are closed before treatment
- Average waiting time for children who receive a second contact

Across all five of our CCG indicator scores, the top ten performing CCGs in 2020/2021 are:

Clinical Commissioning Group (CCG)	CCG overall score 2020/21
1. NHS WAKEFIELD CCG	25
2. NHS TEES VALLEY CCG	24
3. NHS HEYWOOD, MIDDLETON AND ROCHDALE CCG	23
4. NHS WOLVERHAMPTON CCG	22
5. NHS NORTH EAST LINCOLNSHIRE CCG	22
6. NHS CITY AND HACKNEY CCG	21
7. NHS LIVERPOOL CCG	21
8. NHS ROTHERHAM CCG	21
9. NHS BERKSHIRE WEST CCG	20
10. NHS WIRRAL CCG	20

CAMHS; “a last resort”

*“CAMHS should be the **last resort for children and families**. As Head of Community CAMHS, I believe that children and young people should always be supported within their families and communities, and within existing trusted relationships where possible - and one to one approaches should be a last resort – as that often locates a difficulty within a child rather than the system.*

Page 37 *Thrive and Thrive-like approaches show that this is the best way to support CYP. Of course, some need a CAMHS approach, but we must all look to why this approach is needed over something else. We all think of CAMHS as the solution, but Social Care, Education and the voluntary sector should be thought about alongside CAMHS.*

The WAMHS approach provides an example of a system-level response and would be the first port of call where young people are in school. SPA (Single Point of Access) is instrumental in this approach being taken forward, therefore I would recommend everything coming through SPA and not stopping referring because of waiting lists, as this enables scrutiny of the approach offered to our children and young people, utilising the whole CAMHS Alliance and Emotional Health & Wellbeing offer in City and Hackney.”

Susan Crocker (Joint Head of Community CAMHS, Homerton Healthcare Foundation Trust)

This page is intentionally left blank



<p>Children & Young People Scrutiny Commission</p> <p>March 20th 2023</p> <p>Item 5 - Cabinet Q & A</p>	<p>Item No</p> <p>5</p>
--	--------------------------------

Outline

Cabinet members who have responsibility for children and young people's services are invited to the Commission annually, to enable members to scrutinise services within their portfolio. The Commission may identify up to three service or policy areas on which to focus its questioning which must be notified to the Cabinet member 6 weeks in advance of the meeting. The Cabinet member is required to give a verbal response at the meeting.

For this session, the Commission requested that the Deputy Mayor and Cabinet Member for Education, Young People and Children's Social Care respond to questions on 3 policy areas:

1. Can the Cabinet member outline the key areas of the Young Hackney offer to local schools?

Questions that the Commission would like to follow up on:

- How does Young Hackney assess the quality and outcomes of this work with local schools?
- How does the Young Hackney offer interrelate with other school support services such as CAMHS, WAMHS and the Re-Engagement Unit? Are these services effectively coordinating provision to support children and local schools?
- Not all schools equally engage with the universal offer by Young Hackney, how does Young Hackney work with those schools which may be reluctant to engage and refer children for support?

2. Can the Cabinet member outline how many children are currently placed in temporary accommodation by Hackney Council and is there a *local* understanding of how this impacts on children's welfare?

Questions that the Commission would like to follow up on:

- How many children placed in temporary accommodation are being supported by Children and Families Service (children in need, on a child protection plan or supported by early help)?
- What are the social care, health and education accountability arrangements for those children that are placed in temporary accommodation *outside the borough*?
- Is there a clear and consistent welfare offer which is systematically presented to children and families living in temporary accommodation - so that they know what help is available and how they can access it (e.g. early help)?

- What standards and protocols are in place to ensure that families with children are not placed in inappropriate temporary accommodation (e.g. safeguards for shared facilities, childcare access, accommodation with stairs for families with buggies, wifi access, easy access to laundry facilities etc)?

3. Can the Cabinet member outline the scale of Children who go Missing From Care in Hackney and the associated safeguarding risks that children face when they go missing?

Questions that the Commission would like to follow up on:

- Does the Children and Families Service analyse (both individually and collectively) why children go missing from care - and how support is adapted in response (i.e. is CFS alert and responding to the circumstantial risks when children go missing?)
- What does the Children and Families Service know about disproportionalities within the cohort of children who are going missing from care?
- What support is provided to foster carers when children in their care go missing from care - both the in-house team and those working for independent foster carers?
- How many Unaccompanied Asylum Seeking Children (UASC) go missing, are there any additional safeguards for this cohort?



Children & Young People Scrutiny Commission March 20th 2023 Item 6 - Unregistered Educational Settings	Item No 6
---	---------------------

Outline

At its meeting on 16th January 2023, the Commission followed up the recommendations of a review into unregistered educational settings which took place in 2017.

The Commission agreed to write to the Secretary of State for Education setting out the ongoing safeguarding risks that such settings posed for children in Hackney, and to request additional legislation to bring these into regulatory oversight by safeguarding bodies.

To note the letter to Secretary of State for Education

To follow

This page is intentionally left blank



Children & Young People Scrutiny Commission March 20th 2023 Item 7 - Support to Young Parents	Item No 7
--	---------------------

Outline

At its meeting on 20th March 2023, the Commission received a report and discussed with officers (Education, Public Health & Children's Social Care) the support available for young parents in Hackney.

To support its review into this policy area, the Commission held a number of focus groups with young parents and conducted a site visit to a local mother and baby unit.

The Commission has written to the Deputy Mayor and Cabinet Member for Education, Young People and Children's Social Care setting out its findings and recommendations for this area which is enclosed for members to note.

To follow

This page is intentionally left blank



Children & Young People Scrutiny Commission March 20th 2023 Item 8 - Recruitment & Retention of Foster Carers	Item No 8
--	---------------------

Outline

At its meeting in September 2022, the Commission followed up on its previous investigation into the recruitment and retention of foster carers in Hackney. To support this item, the Commission conducted a survey of all in-house foster carers in Hackney and also held a focus group with 10 foster carers from the in-house team.

Prior to consultation with foster carers and local officers, the Commission has produced a draft report for the consideration of members.

To follow

This page is intentionally left blank



Children & Young People Scrutiny Commission March 20th 2023 Item 9 - Work Programme 2022/23	Item No 9
--	---------------------

Outline

The work programme of the Commission is reviewed at each meeting by members. As this is the last meeting of the Commission in this municipal year, members of the Commission are invited to reflect on this year's work programme and priorities for scrutiny heading into 2023/24.

This page is intentionally left blank

Children & Young People Scrutiny Commission Work Programme 2022/23

July 11th 2022	September 29th 2022 (Moved from 8th September 2022)
School Admissions (40)	Foster Carers (i) Recruitment and Retention Strategy (ii) Assessing local support offer (ii) (75)
Childcare Sufficiency Strategy (40)	Update on GCSE and A Level results in Hackney (20)
Outcome of School Exclusion - Cabinet response (10)	Demographic Analysis of EHCPs in Hackney (40)
Work Programme - Consultation Reporting 2022/23 (40)	Work Programme - Outline 2022/23 (10)
October 31st 2022 -	November 30th 2022
School Exclusions and School Moves Monitoring (45m) (To include absence, persistent absence, emotional withdrawal)	Budget Monitoring - Children & Families Service (30-45)
Ofsted Focused Visit Outcome (10m) verbal update	Children & Families Annual Report (45)
Childhood food poverty - eligibility, accessibility and uptake of FSM (60)	SEND Strategy (40)
January 16th 2023	February 27th 2023
City & Hackney Safeguarding Children Partnership (45)	Cabinet Q & A - Cllr Woodley (Early Years, SEND, Parks and Play) (45)
Unregistered Educational Settings (30)	SEND Action Plan (45 min)
Outcome of School Exclusions - Progress of Recommendations (45)	Budget Monitoring - Hackney Education (30)
	(Children and Families Annual Report - to note - written Q &A for March/April 2023)
March 20th 2023	April 17th 2023
Support for Young Parents (Race, racism and children's social care) (60)	Accessibility of CAMHS - strategic plan to reduce waits, single point of access, support for CYP on waiting lists
Pupil Attainment - Attainment Gap (45) Focus on children in AP	Cabinet Q & A - Cllr Bramble (Children, Education & Children's Social Care) (45) Areas of questioning

Children & Young People Scrutiny Commission Work Programme 2022/23

Meeting 1	Item title and scrutiny objective	Directorate – Division – Officer Responsibility	Preparatory work to support item
<p>Meeting Date: Monday 11th July</p> <p>Deadline for reports: 28/6/22</p> <p>Publication 1/7/22</p>	<p>School Admissions To review sufficiency of primary and secondary school places ahead of September 2022 school entry.</p>	<ul style="list-style-type: none"> ● David Court TBC ● Annie Gammon, Director of Education and Head of HLT 	<ul style="list-style-type: none"> - Background reports to be circulated
	<p>Childcare Sufficiency It is a statutory requirement for members to review local childcare sufficiency reports which are produced bi-annually. The Commission to review the full assessment report for 2022.</p>	<ul style="list-style-type: none"> ● Donna Thomas, Head of Early Years, Early Help & Well-being ● Tim Wooldridge, Early Years Strategy Manager ● Annie Gammon, Director of Education 	<ul style="list-style-type: none"> - Focus groups with small number of nursery providers
	<p>Outcome of School Exclusions The note and review the Cabinet response to the Commission's review of the Outcome of School Exclusions.</p>	<p>Members of the Commission</p>	
	<p>Development of new CYP Work Programme for 2022/23</p>	<ul style="list-style-type: none"> ● Commission/ Scrutiny officer 	<ul style="list-style-type: none"> ● To consult local stakeholders ● Meet with service Directors ● Collate topic suggestions ● Informal meeting with Commission

Children & Young People Scrutiny Commission Work Programme 2022/23

Meeting 2	Item title and scrutiny objective	Directorate – Division – Officer Responsibility	Preparatory work to support item
<p>Meeting Date: Thursday 29th September</p> <p>Papers deadline: 30/8/22</p> <p>Agenda dispatch: 21/9/22</p>	<p><u>Recruitment & Retention of Foster Carers:</u></p> <ul style="list-style-type: none"> - to review the progress of Commissions recommendations contained in an earlier review - to assess the local offer to in-house foster carers. 	<ul style="list-style-type: none"> • Diane Benjamin, Director of Children's Social Care • Laura Bleaney, Head of Corporate Parenting • Korinna Steele, Head of Fostering Placements • Hackney Foster Carer Council representatives 	<p>Consultation with in house foster carers set for 31st August 2022</p> <p>Supported by a survey to all in-house foster carers.</p>
	<p><u>School Exam Results 2022</u></p> <p>A brief verbal update on the performance of young people at GCSE and A Level in Hackney</p>	<ul style="list-style-type: none"> • Anni Gammon, Director of Education 	
	<p><u>Demographics of EHCPs in Hackney:</u></p> <p>The Commission has requested the following data for the past 3 years (age group, ethnic group, originating setting (inc those not in education):</p> <ul style="list-style-type: none"> - Children with EHCPs in Hackney; - New EHCPs granted in Hackney; - Number of EHCP requests - Number of requests for assessments refused - Requests for assessments which do not result in EHCP issued. 	<ul style="list-style-type: none"> • Joe Wilson, Head of SEND • Annie Gammon, Director of Education 	
	<p><u>Work programme 2022/23</u></p> <p>To continue discussions on future work programme items for 2022/23.</p>	<ul style="list-style-type: none"> • Commission • Scrutiny Officer 	

Children & Young People Scrutiny Commission Work Programme 2022/23

Meeting 3	Item title and scrutiny objective	Directorate – Division – Officer Responsibility	Preparatory work to support item
<p>Meeting Date: <u>Monday October 31st 2022</u></p> <p>Papers deadline: <u>18/10/22</u></p> <p>Agenda dispatch: <u>21/10/22</u></p>	<p>School Exclusions and School Moves: (45) This is a standing item on the work programme of the Commission to review the number of school exclusions, School Moves, children in Elective Home Education and in Alternative Provision (with demographic analysis including SEND status). In light of rising rates (in connection with exclusion) a short section on school /AP absence, persistent absence to be included. Including missing children - emotional withdrawal etc.</p>	<ul style="list-style-type: none"> Chris Roberts, Head of Wellbeing and Education Safeguarding Paul Senior, Director of Education 	
	<p>Ofsted Focused Visit (15) A focused visit by Ofsted was announced for 21st and 22nd of September 2022. Ofsted will focus on front door service for children's social care (e.g. assessments, thresholds etc).</p>	<ul style="list-style-type: none"> Jacque Burke, Group Director for Children and Education Diane Benjamin, Director of Children's Social Care 	
	<p>Childhood food poverty: eligibility, accessibility and uptake of free school meals (FSM) (60) In response to the scrutiny consultation which raised childhood food poverty, the Commission is assessing schools response: the eligibility and uptake of FSM, breakfast club provision and connection to wider food poverty networks and programmes.</p>	<ul style="list-style-type: none"> Paul Senior, Interim Director of Education David Court, Head of School Organisations, Admission and Pupil benefits and Commissioning 	<ul style="list-style-type: none"> Invite local head teachers for illustrative work they have been doing in relation to FSM, accessibility On site visits to local schools and community food programme projects.
	<p>Work programme 2022/23 To continue discussions on future work programme items for 2022/23.</p>	<ul style="list-style-type: none"> Commission Scrutiny Officer 	

Children & Young People Scrutiny Commission Work Programme 2022/23

Meeting 4	Item title and scrutiny objective	Directorate – Officers	Preparatory Work
<p>Meeting Date: <u>November 30th 2022</u></p> <p>Papers deadline: <u>18th November 2022</u></p> <p>Agenda dispatch: <u>22th November 2022</u></p>	<p><u>Children and Families Annual Report (45)</u> This report could not be provided for this meeting and a briefing will be provided to members of the Commission summarising activity in children's social care for the period 2021/22. To be taken alongside the budget monitoring report.</p>	<ul style="list-style-type: none"> • Diane Benjamin, Director of Children's Social Care • Jacquie Burke, Group Director of Children and Education 	
	<p><u>Children and Families - Budget Monitoring (30-45)</u> This is a standing item on the work programme which reviews and monitors in year budgets for Children and Families Service, including progress against agreed savings proposals. This is taken alongside the CFS Annual report, so scrutiny of policy and budgets are aligned. The Commission has requested a more detailed breakdown of the Corporate Parenting Budget (e.g. foster care, residential placements, supported housing etc.)</p>	<ul style="list-style-type: none"> • Naeem Ahmed, Director of Finance (Children, Education, Adults, Health & Integration) • Sajeed Patni, Head of Finance Children's and Education, Finance • Diane Benjamin, Director of Children's Social Care 	
	<p><u>SEND Strategy (20-30)</u> Alongside partners, the Council has developed a SEND Strategy for 2022-2025 which is due for approval at Cabinet in November 2022. This item is predominantly to note the key priorities set out in the Strategy and to update the Commission on the progress on the subsequent Action Plan, and scrutiny role in the oversight and monitoring of that.</p>	<ul style="list-style-type: none"> • Paul Senior, Director of Education • Nick Wilson, Interim Head of High Needs & School Places • Joe Wilson, Head of SEND 	
	<p><u>Work programme 2022/23</u> To continue discussions on future work programme items for 2022/23.</p>	<ul style="list-style-type: none"> • Commission • Scrutiny Officer 	

Children & Young People Scrutiny Commission Work Programme 2022/23

Meeting 5	Item title and scrutiny objective	Directorate – Division – Officer Responsibility	Preparatory work to support item
<p>Meeting Date: January 16th 2023</p> <p>Papers deadline: 4th January 2023</p> <p>Agenda dispatch: 6th January 2023</p>	<p><u>City & Hackney Safeguarding Children Partnership (45)</u> This is a standing item on the work programme which reviews the annual report and activities of City and Hackney Safeguarding Children Partnership.</p>	<ul style="list-style-type: none"> • Jim Gamble, Independent Chair, CHSCP • Rory McCallum, Senior Professional Adviser 	
	<p><u>Unregistered Educational Settings (30)</u> This is a short item to review progress against the Commission's recommendations made in 2018.</p>	<ul style="list-style-type: none"> • Katherine Cracknell, Head of Wellbeing and Education Safeguarding • Paul Senior, Director of Education and Inclusion • Jim Gamble, Independent Chair, CHSCP • Rory McCallum, Senior Professional Adviser 	
	<p><u>Outcome of Schools Exclusions (45):</u> The Commission to follow up the recommendations made in its review which was completed in December 2021 and approved by Cabinet March 2022.</p>	<ul style="list-style-type: none"> • Katherine Cracknell, Head of Wellbeing and Education Safeguarding • Paul Senior, Director of Education and Inclusion 	
	<p><u>Work programme 2022/23</u> To continue discussions on future work programme items for 2022/23.</p>	<ul style="list-style-type: none"> • Commission • Scrutiny Officer 	

Children & Young People Scrutiny Commission Work Programme 2022/23

Meeting 6	Item title and scrutiny objective	Directorate – Division – Officer Responsibility	Preparatory work to support item
<p>Meeting Date: 27th February 2023</p> <p>Papers deadline: 14th February 2023</p> <p>Agenda dispatch: 17th February 2023</p>	<p><u>Cabinet Q & A (45)</u> The Commission may question the Cabinet member (Cllr Caroline Woodley, Cabinet member for Families, Parks and Leisure) on three policy areas for which they are responsible within their Cabinet portfolio. The Cabinet member to be notified of topics 6 weeks in advance (3rd January 2023).</p> <p>Cabinet members to verbally present on these three areas and take questions from the Commission.</p> <ol style="list-style-type: none"> 1. Update on children's centres (and Family Hubs) 2. Support for parents of children with SEND 3. Waiting times and action plans for SLT and Ed Psych. 		
	<p><u>SEND Action Plan (60)</u> The SEND Strategy was agreed by the Cabinet in November 2022. A partnership action plan has been developed in response over which the Commission will maintain oversight, review delivery and progress. Invitees:</p> <ul style="list-style-type: none"> ● Paul Senior, Director of Education ● Nick Wilson, Interim Head of High Needs & School Places ● Joe Wilson, Head of SEND ● Jacqueline Agyekum – Designated Clinical Officer for Health (TBC) ● Sarah Darcey - Health Commissioner - Hackney ● Stephen Jahoda - Head of Disabled Children's Service - LB Hackney ● Georgina Diba, Director of Adult Services – LB Hackney 		
	<p><u>Hackney Education - Budget Monitoring (30)</u> This is a standing item on the work programme to review in year budgets and progress against savings proposals for Hackney Education. The Commission has also requested a more detailed budget breakdown for:</p> <ul style="list-style-type: none"> - Childrens Centres (budget circa £10-12m); - Commissioning of (SEND) Independent and Non-Maintained Special Schools (budget circa £14m). <ul style="list-style-type: none"> ● Sajeed Patni, Head of Finance Children's and Education, Finance ● Naeem Ahmed, Director of Finance (Children, Education, Adults, Health & Integration) 		

Children & Young People Scrutiny Commission Work Programme 2022/23

Meeting 7	Item title and scrutiny objective	Directorate – Division – Officer Responsibility	Preparatory work to support item
<p>Meeting Date: 20th March 2023</p> <p>Papers deadline: 7th March 2023</p> <p>Agenda dispatch: 10th March 2023</p>	<p>Support for Young Parents (75 mins) Following on from the work in relation to disparities in maternity outcomes, the Commission will assess what support is available to young parents and how this is coordinated across statutory partners and other responsible agencies. To cover:</p> <ul style="list-style-type: none"> - Family Nurse Partnership - HV/MW - CFS/ YH <p>The Commission will view this in the context of disproportionality of children's social care, where it has requested ethnicity data for children's social care contacts in relation to:</p> <ul style="list-style-type: none"> - Looked after children - Children in Need - Children on a Child Protection Plan. 	<ul style="list-style-type: none"> ● Diane Benjamin, Director of Children's social Care ● Laura Bleaney, head of Looked after Children ● Carolyn Sharpe, Consultant in Public Health Children and Young People ● Cathy Ashley, Chief Executive of Family Rights Group 	<ul style="list-style-type: none"> ● Scoped with PH and CFS ● Focus Group with young parents through Care Council 6th and 8th March 2023
	<p>Pupil Attainment - Attainment Gap (45) This is a standing item on the work programme where the educational attainment of children in Hackney is reviewed.</p> <p>This will be the first year since returning to in person exams. The Commission has indicated that in addition to usual focus on the attainment gap between key cohorts (Black Caribbean boys, Turkish Cypriot boys, Gipsy Roma/ Irish Traveller) there will be an additional emphasis on children in Alternative Provision.</p>	<ul style="list-style-type: none"> ● Paul Senior, Director of Education and Inclusion ● Jason Marantz, Assistant Director, School Standards & Improvement 	

Children & Young People Scrutiny Commission Work Programme 2022/23

Meeting 8	Item title and scrutiny objective	Directorate – Division – Officer Responsibility	Preparatory work to support item
<p>Meeting Date: 17th April 2023</p> <p>Papers deadline: 31st March 2023</p>	<p>Accessibility of CAMHS The accessibility of CAMHS figured prominently in the scrutiny consultation 2022. There were ongoing concerns around waiting times, access to services and plans to develop a single point of access.</p> <p>This item is being scoped with respective service leads.</p>	<ul style="list-style-type: none"> • Nadia Sica, Workstream Director Integrated Commissioning: Children, Young People, Maternity and Families, NHS North East London London Borough of Hackney • Greg Condon, Mental Health Programme Manager, Health & Care Board • Sophie Mcelroy, CAMHS Alliance Senior Project Manager 	<ul style="list-style-type: none"> - Focus group with providers for all members on 22nd March 2023. - Site visits to Hackney Ark and Homerton Row Specialist Service - dates to be confirmed.
<p>Agenda dispatch: 5th April 2023</p>	<p>Cabinet Q & A The Commission may question the Cabinet member on three policy areas for which they are responsible within their Cabinet portfolio.</p> <p>Three areas (full detail here):</p> <ul style="list-style-type: none"> - Children in temporary accommodation - Young Hackney - quality and outcomes - Children missing from care 	<ul style="list-style-type: none"> • Cllr Bramble, Deputy Mayor and cabinet member for education, young people and children’s social care 	<ul style="list-style-type: none"> • Cabinet member notified of topics 6 weeks in advance: March 6th 2023

Children & Young People Scrutiny Commission Work Programme 2022/23

Page 58

Possible items noted for 2023/24	
1. School Admissions	A review of the local school admissions system and to assess disparities. What demographic variations exist among local schools? Does the current local admissions system generate inequities?
2. Residential Placements	Commissioning arrangements for residential placements for looked after children, How is the Children and Families Service addressing longer term need for residential placements? How is the Children and Families Service working with other boroughs to jointly provide/ commission services (rather than reliant on the private sector which may be some distance from Hackney and of variable quality).
3. Graduated SEND provision within schools	A new graduated response was introduced within local schools to enable more children to be supported in schools but without the need for an Education and health Care Plan. How is this working out in practice? Are all schools taking up the local SEND offer by the Local Authority?
4. Disabled Children Service	This service was moved to Children and Families Service in 2020 from Hackney Education. Past safeguarding partnership reports have noted that there have been concerns around reviews not being completed.
5. A new vision for the Pupil Referral Unit.	The PRU is being redeveloped. How will it work preventatively with young people with SEND or at risk of exclusion?
6. Childhood obesity in Hackney	How do the levels of Childhood obesity compare with other boroughs? Is there a local strategy and how effective are local interventions to address this issue?
7. Childhood immunizations in Hackney	How do levels of childhood immunisation rates in Hackney compare to other boroughs? Are rates of immunisation equal across the community, and if not, what actions are being taken to address this?
8. Hackney Youth Justice Plan	Hackney Youth Justice Plan - The current Youth Justice Plan expires in 2022 and a new plan is being developed for the period 2022-2025. Scrutiny assists in

Children & Young People Scrutiny Commission Work Programme 2022/23

	development of the plan - or input before finalisation.
9. Children in temporary accommodation	How many children are living in temporary accommodation - and what type? Is the data of sufficient quality and depth to maintain oversight of this cohort - needs, impact and support? What support is provided for children placed in TA outside of the borough - who is responsible for social care, SEND, education provision and health provision? How is support coordinated? If children are vulnerable (LAC, CiN, CPP, SEND) how does this impact on housing placements / allocations?
10. Children missing from care	Young people who are going missing from care is an area of significant safeguarding risk. What is the local incidence - does it affect different cohorts of children (e.g. boys, unaccompanied young asylum seekers)? What support is offered to local foster carers - and other settings?
11. Health of looked after Children	This was suggested as a topic of investigation in summer of 2022 by DPH. During the course of this year's scrutiny, care experienced children and young people's access to health care and support has been raised within a number of contexts (support for young parents, foster carers and access to CAMHS)
12. SEND Action Plan	The Commission agreed that it should maintain oversight of the planned improvements in SEND services by scrutinising the SEND Action Plan in the 2023/24 work programme. A formal performance scorecard to be requested (statutory KPI and local waiting times) will support scrutiny.
13. Family Hubs	Family Hubs are still in development and a number of member briefing sessions have been held. An update was presented to the Commission at Cabinet Q and A, but no formal plan has been presented to Cabinet for approval as yet. The Cabinet member indicated that CYP Scrutiny would be involved in the consultation for this development (expected May and June 2023).
14. Affordable Childcare Commission	This was established in March 2023 and was likely to run for 6-9 months, which will bring reporting or updates into the 2023/24 work programme. This will also have implications for local children's centres.

Children & Young People Scrutiny Commission Work Programme 2022/23

15. Support for Young Parents - Enhanced health Visiting Service	The Commission reviewed support for young parents at the meeting of 20/3/23 noting the introduction of the replacement for Family Nurse Partnership would be a new Enhanced Health Visiting Service. The new service would start in September 2023, and it may be opportune to review 6-12 months after that (March - September 2024).
16. Hackney Education Improvement Plan	Hackney Education published an improvement plan in 2022 setting out service areas for improvement to 2024. The Commission may wish to review in 2023/24.
17. School closures	Hackney has announced plans to close two primary schools and merge a further 4 into two new schools. Proposals will formally be presented at Cabinet in May 2023 with consultations following from that date, with planned changes due to be in place by September 2024. The Commission may wish to be involved in the consultation.
18. Sufficiency of Children's Social Care	Local Authorities are required to set out plans to ensure that there is sufficient children's social care capacity to meet local needs. This is undertaken biannually with the next report expected in 2023.



Children & Young People Scrutiny Commission March 20th 2023 Item 10 - Minutes	Item No 10
--	----------------------



Outline

To review and agree the minutes of the last meeting held on March 20th 2023.

This page is intentionally left blank

London Borough of Hackney
Children and Young People Scrutiny Commission
Municipal Year 2018/19
Date of Meeting Monday 20 March 2023

Minutes of the proceedings of the
Children and Young People
Scrutiny Commission held at
Hackney Town Hall, Mare Street,
London E8 1EA

Chair	Councillor Sophie Conway
Councillors in Attendance	Cllr Margaret Gordon (Vice-Chair), Cllr Alastair Binnie-Lubbock, Cllr Anya Sizer, Cllr Lynne Troughton and Cllr Claudia Turbet-Delof
Apologies:	Cllr Lee Laudat-Scott, Cllr Caroline Selman and Cllr Sheila Suso-Runge
Co-optees	Richard Brown, Andy English, Jo Macleod and Steven Olalere
In Attendance	<ul style="list-style-type: none">- Cllr Anntionette Bramble, Deputy Mayor and Cabinet Member for Education, Young People and Children's Social Care- Cllr Caroline Woodley, Cabinet Member for Families, Early Years, Parks & Play- Jacque Burke, Group Director Children and Education- Diane Benjamin, Director of Children's Social Care- Laura Bleaney, Head of Corporate Parenting- Gemma Vare, Quality Improvement Partner Children's Centres- Carolyn Sharpe, Consultant in Public Health- Cathy Ashley, Chief Executive, Family Rights Group- Paul Senior, Director of Education & Inclusion- Jason Marantz, Assistant Director, School Standards & Improvement- Anton Francic, Principal Secondary Advisor- Tim Wooldridge, Early Years Strategy Manager
Livelihood:	To replay the meeting: https://youtu.be/5U0r4e0w7wc
Members of the Public	None
Officer Contact:	Martin Bradford  020 8356 3315  martin.bradford@hackney.gov.uk

Councillor Sophie Conway in the Chair

1 Apologies for Absence

1.1 Apologies for absence were received from the following members of the Commission:

Cllr Sheila Suso Runge;
Cllr Lee Laudat Scott;
Cllr Caroline Selman.

1.2 The following members connected virtually:

Cllr Midnight Ross;
Salmah Kansara (Co-opted Member)

2 Urgent Items / Order of Business

2.1 There were no urgent items and the agenda was as had been published.

3 Declarations of Interest

3.1 The following declarations were received by members of the Commission:

- Jo Macleod, school governor and mother of child with SEND in the borough;
- Cllr Anya Sizer, mother of a child with SEND in the borough.

4 Support for Young Parents

4.1 Following on from work on the disproportionalities in perinatal mental health from the 2021/22 work programme, the Commission agreed to review the support available to young parents (under age of 25) in Hackney. The aim of this item was to:

- Review needs of young parents and ensure that this is being effectively met across local services;
- Assess how services work together to support young parents and as well as their children;
- Identify ways in which the local offer to young parents might be extended or improved.

4.2 A report from Public Health and Children and Families Services on services which directly support or commission services to support young parents was provided to the Commission. The report provided an overview of the range of support which is provided to young parents, including those who are care experienced.

4.3 As well as officers from Children and Families, Public Health and Education, the Commission also invited Cathy Ashley, the Chief Executive of Family Rights Group (FRG) to also attend. FRG is a national charity supporting children and families and which (among other services) provides dedicated advice, help and support for young parents.

4.4 Ahead of this meeting, the Chair and Vice Chair also held two focus groups with young parents to understand more about their experience of being a young parent in Hackney, the range of support they have received from local services and what they thought should be improved for other young people in their situation.

Public Health

4.5 Officers presented the published paper and highlighted the following:

- The Family Nurse Partnership (FNP) would no longer be commissioned to support young parents, but would be replaced by an Enhanced Health Visiting Service (EHVS). The FNP was a licensed service which meant it was inflexible in how it could support young parents (i.e. only support first time mothers under the age of 25, first child only up to the age of 2, and mothers cannot access the programme after 28 weeks of pregnancy).
- The new EHVS would be an additional tier to Health Visiting services currently commissioned which would not be age restricted, or focused on the first child, but would be based on needs of parents. Basing the EHVS within existing health Visitor provision would also enable support to be stepped up and stepped down as needed.
- The FNP will end on 31st August 2023 with new EHVS starting on 1/9/23. It was noted that the FNP had not taken on any additional clients since October 2023 when the decommissioning was announced. New young parents who would have qualified for FNP support are being cared for by universal services in the interim. Those currently on the FNP programme would continue to be supported, but would transition to the EHVS in September 2023.
- Other universal services provided through public health included a community based mentoring service which was also currently being re-commissioned. Other areas of provision included Clinical Health and Wellbeing Service and a substance misuse service.

Children's Centres

4.6 Children's Centre leaders highlighted the following:

- Although there was no focused work on supporting young parents, young families in need were supported through the universal offer of Children's Centres work. Around 11% of current users were young parents who used a range of specialist (e.g. PH Midwife) and open access services (e.g. Stay and Play). Open access services were used to identify those families who may need additional specialist support such as SLT.
- The Children Centres service was moving to a Children and Family Hubs model of provision. A key element of this new model would be the Start for Life offer which focused on the first 100 days of a child life after birth.

Children and Families Service

4.7 Children and Families Service leaders highlighted the following from the report:

- The number of care leavers and looked after children who were young parents was low in Hackney. This would suggest that the vast majority of care leavers are successfully parenting.
- The biggest concern for young parents is housing and the service aims to provide a range of options for care experienced parents which include mother and baby fostering, a dedicated mother and baby unit as well as more independent housing options. There are currently two 2-bedroom social rented properties available to care leavers annually.
- The National Adviser for Care Leavers visited the service in 2022 where discussions focused on the corporate grandparent role of the Council, and what that local offer would include.
- There are also plans to establish a care leavers hub in Hackney which could support activities like Stay and Play sessions which could support young parents. Peer support is central in helping young parents to develop supportive networks and personal resilience.
- Engaging fathers is a challenging issue and to encourage them to participate in the parenting process. Young fathers potentially have a lot to offer in terms of family support, but do need to be made to feel welcome and that they have a role to play. Too often statutory services appear to push young fathers away which should be challenged. It was acknowledged that whilst there were probably a

number of care experienced young men who were fathers, the service was not aware of who these might be.

Family Rights Group

4.8 The Chief Executive noted the mission of the Family Rights Group (FRG) was to create a more socially just society in which the child welfare and family justice systems support children to live safely and thrive within their family, while strengthening the family and community networks of those children who cannot live at home. The FRG has 5 strategic priorities:

1. Families involved with the child welfare and family justice system are treated fairly, have their rights respected and are able to make informed decisions;
2. Children and families get the help they need, so wherever possible children can live safely and flourish within their family network;
3. All children, including those in care, have lasting and supportive relationships to sustain them throughout their lives;
4. Our child welfare and family justice systems – and wider society – promote social justice and create conditions that enable children to achieve their potential;
5. Children and families' voices and experiences drive decision making at an individual and strategic level within the child welfare and family justice systems.

4.9 FRG works with Become, a national care leaver charity to provide dedicated advice, guidance and support for young care experienced parents and would encourage local services to refer young parents to this service where necessary. The FRG also conducted research into the needs of young parents which concluded that in many local authorities, the specific needs of this group were not sufficiently recognised in service priorities, or reflected in local protocols or practice.

4.10 The organisation also supports a dedicated website to provide advice, guidance and advocacy to young parents. When children's social care was involved, young parents often felt the process to be alienating and had difficulty navigating and negotiating with care authorities. FRG found that young parent's access to local independent advocacy and advice services was inconsistent, and was therefore a key part of a new FRG offer.

4.11 FRG also noted that there was a failure to fully recognise young fathers as a resource, and consequently were often not fully incorporated or left out of support plans for young families. Young fathers had spoken of being 'ghosts in the room' thereby limiting the potential support role that they and their wider family may be able to provide.

4.12 Further feedback from the national helpline suggested that a number of authorities continued to hold child protection conferences on-line. Parents indicated that the on-line format was problematic as this did not help them to understand or engage with proceedings and the decisions being taken (e.g. it was often difficult to know who was in the room and the role that they played, and how they themselves could contribute).

4.13 The importance of co-design and co-production was also emphasised by the FRG to ensure that local services acknowledged and responded to the needs of young parents. From its own work and from its knowledge of what worked in local authorities, it was important that engagement to support this was not 'one-off' but through established and ongoing structures.

4.14 The Born into Care Study highlighted higher levels of care proceedings with children born to young mothers. Analysis of calls to the young parents helpline operated by FRG also noted the frequency at which domestic violence featured in concerns presented. It was suggested that this should also be reflected in local plans to support young parents.

4.15 To conclude, a key defining feature of the needs of young parents, particularly those with care experience, was that in many cases these young people were socially isolated and did not have an extensive network of support from families or friends. In this context, support for young parents should focus on helping them to build relationships to extend their network of support.

Feedback from Focus Groups

4.16 The Commission held two focus groups with young parents who were care experienced and facilitated by Hackney of Tomorrow. The key issues to emerge from these focus groups are summarised below:

4.16.1 Accessibility of key antenatal and maternity services:

These services felt intimidating for young parents to access, particularly as some young parents accessed these services alone;

Young parents also questioned whether such services were aware of their specific needs?

4.16.2 Housing issues for young parents was a key issue and figured prominently in all discussions:

- Some young parents described how they were moved multiple times before the birth of their child over to setting in which they had little choice and were often given little notice;
- Young parents were often placed in temporary accommodation which left them unsure of their future options for them and their child, and they also questioned the suitability of such placements for mother and babies (e.g. single room with cooking facilities enclosed);
- Those placed in temporary accommodation cited that this was frequently outside of the borough and away from their social support networks.

4.16.3 Young parents also spoke about their postnatal mental and emotional health needs:

- A number described feeling isolated after the birth and as a single parent, which was compounded by transient nature of housing and accommodation;
- Young parents also noted that there were limited opportunities for peer support - to engage and share with other young parents;
- Whilst young parents understood the need for some restrictions on visitors to temporary accommodation units where they may be staying, this further limited opportunities for social contact and support.

4.16.4 Care experienced young parents reported strong and positive relationships with their social worker (SW) and or personal adviser (PA).

- There were a number examples of positive and affirmative support for young parents from their SW/PA, though some were better equipped to support them in their journey to parenthood than others (a social worker offered to be a birthing partner and another knitted a blanket);
- Care experienced young parents were also unclear how to manage the boundaries for social work support for their child and for them as a care leaver and felt that they needed additional support in this respect.

4.16.5 Access to education, training and employment was of critical importance to young parents;

- With additional care responsibilities, young parents noted the importance of advancing training and work opportunities to support their family;
- There were mixed responses as to the range of support provided, greater access to local apprenticeship programmes would be beneficial;

- Access to childcare and support was critical to them developing education and training opportunities, but not all were made aware of the Care to Learn programme.

4.17 The Chair noted the specific concerns of care experienced young parents and how growing up in care had impacted on their relationship with statutory care services and how comfortable issues could be raised, for example, issues around their own mental health. Young parents were anxious that such concerns would be dealt with and possible wider implications for their family.

Questions from the Commission

4.18 Given the complexity of the needs and service response needed to support this cohort of young parents. Is there a shared understanding of the needs and the service priorities of young parents across the local partnership of services? Where does effective oversight of the partnership of services which support young parents sit and does it ensure that services are working together effectively to support the needs of young parents? How is Hackney working to ensure that young parents have access to a consistent service? Specifically, what are the current local priorities for supporting the needs of young parents?

- It was acknowledged that it can be challenging overseeing support for care experienced young mothers, particularly when they may be living outside of the borough. The children and families service (CFS) was working to extend the reach of local services to support this cohort, to ensure continuity of support and maintain connections with Hackney. CFS also welcomed proposals to extend peer mentoring and would follow this up with Public Health, particularly if this programme could be used to support care experienced young people. CFS was also cognisant of its Corporate Grandparent role and it was encouraging to note the practice of social workers in supporting care experienced young parents.

4.19 The Commission welcomed the commitment to extend peer mentoring support to help develop emotional resilience among young parents, and requested further information on the scope and priority for this work and timeframes for implementation.

- It was acknowledged that young parents may face difficulties accessing services because they lack knowledge or confidence to do so. Building trust was also a key aspect of working with young parents. Support for parents on the vulnerable parents pathway was focused in 3 areas: signposting, crisis support and peer mentoring. The latter was a relatively small part of the service at present, helping around 35 women per year, but there were plans to extend this within a new provision which would help to break down barriers to accessing services. It is hoped that the newly commissioned service will support around 180 women per year. There will be a mobilisation period from September 2023 which will take time to recruit and train peer-mentors. It will also be important to ensure that peer mentors reflect the demography of local service users. There are no time-limits on the service as the service will be 'needs led'.
- FRG noted the work that Camden Council were doing around peer mentoring and advocacy. It was felt that this could be a very powerful tool to assist young parents in very challenging contexts.

4.20 In its corporate parenting role, does the council provide sufficient training for care leavers to support positive and effective parenting? Would this be possible to introduce some form of training?

- Children's Centres already have a universal support offer to parents, but through the establishment of Children and Family Hubs would provide a more universal offer for 0-19 year olds, and there would be scope to include parent training within that. It was possible that a linkup between Young Hackney, Secondary Schools and Family Hubs could be used to extend training and development support to parents. It was also emphasised that placed based partnerships such as those between local children's centres, Public Health midwifery and wider

family support offered seamless and integrated support to young and other vulnerable parents in accessible and safe spaces.

- This also related to local ambitions for the development of a care leavers hub to provide integrated multi-agency support from a singular setting, and this would be an opportunity for parenting training.

4.21 What were the FRG views on best practice for engaging and supporting young fathers? If peer mentoring is not open to young fathers, what engagement is happening?

- The Start for Life model which is part of the Family Hubs programme does have a work stream which acknowledges the need to engage and work with fathers. One of the Children's Centres (Ishan) had recently undertaken some developmental work with fathers and learning from this would be shared across the wider children centre network.
- The FRG noted that fathers details are often not recorded in children's social care records, and when these were recorded there was very little detail of the nature of their engagement and support to the family, contact details were out of date. Unsurprising, fathers were less likely to be involved in later proceedings around the welfare decisions of their children. One of the models of good practice was St Michaels Fellowship in Lambeth which identified the need for father specific work and for those activities which helped to build trust and confidence among fathers. There was also an acknowledgement that to be effective, interventions need to be sustained.

4.22 The report indicates that 29 young people accessed an evidence based parenting programme - can further details be provided on this scheme and the outcomes?

- In relation to the evidence based parenting programmes a number of models were used including Strength Through Families and Through Communities. These were 12 week programmes which were evidence based but which did require a sustained level of commitment from families.

4.23 Young parenthood can be difficult to talk about in some communities (such as Middle Eastern countries) which may inhibit young people from obtaining the help and support that they need. What is the council doing to ensure that its support offer to young parents is accessible across all communities? Similarly, what are the maternity needs of young people in the Orthodox Jewish Community and are they any different to the wider community and if so, is there any dedicated support for this community?

- It is important that vulnerabilities are picked up by universal services, irrespective of their community background and ensure that they are referred onward to more specialist services. This is the aim of the new Enhanced Health Visiting Service which will exist in wider universal health Visiting offer. The new provider has been made aware of the vulnerable groups locally and the range of other services which are available to collectively support them.
- The HV service is the universal offer and the first port of call for many families and the route into more specialist services as needed. In relation to the Orthodox Jewish community there is a dedicated Children's Centre (Lubavitch) which provides a range of family and parenting services to the community.

4.24 Continuity of care is often cited as a key factor in better maternity outcomes for mother and baby. What can we do as a local authority to promote continuity of care for young parents pre and post pregnancy?

- Continuity of care is important for better outcomes and there was evidence to suggest that some vulnerable groups were less likely to receive it. It was therefore important that the local offer to young parents and other vulnerable parents was integrated, which would be exemplified in the new Enhanced Health Visiting Service which was embedded within the wider universal health Visiting offer with the same provider and would therefore allow young parents to step-up or step-down care as needed.

4.25 In terms of the existing family visits offered by the Family Nurse Partnership, how would the new Enhanced Health Visiting offer compare? Is there not a risk that the expertise of supporting young parents within the FNP might be lost within the EHVS? How can this specialist knowledge and offer be retained within the universal service?

- The mandated visits (x 5) and the additional visits (x3) detailed in the report relate to the lower parenting support offer. The intensive tier (equivalent to FNP) has been left open in terms of visits as the intention is that the service was to be 'needs led' and could be more or less than 64 sessions.
- Family Nurses were experts in supporting young parents, and where possible it was hoped that these progressions would be retained within the new EHVS and the service was in negotiations to TUPE this cohort of workers over into the new services. This will not only help to retain knowledge and experience within the service and wider HV service, but also extend specialist knowledge through training other HV staff.

4.26 Can young parents be further involved in helping to shape the EHVS offer?

- The new service model has already been developed and put out for tender and commissioning, so in this context, it would be difficult for young parents to shape new provision planned for September 2023. Whilst the outline model has been agreed, the service was engaging young parents and family nurses alike to further guide and inform the development of the new EHVS. It was important to capture the insight from what works in the FNP model and replicate this in the new EHVS.
- The Cabinet member for Families, Parks and Play noted that Parent Carer Panels had been established to support the development of family hubs and would ensure that these contain representation from young parents.

Agreed: The Commission would liaise with Hackney of Tomorrow and Parent Carer Panels to ensure representation of young parents.

4.27 The Group Director reported that high quality universal services were important so as to have sufficient reach to across varying levels of need in the borough, and the new EHVS would be dependent on the intelligence and insight of these services (e.g. Health Visiting, Midwifery) to effectively target young parents in need. The Group Director assured the commission that a focus on the needs of young parents would be retained within the new EHVS.

4.28 The Family Rights Group made the following concluding remarks in terms of good practice which may be considered in Hackney. It was reiterated that where young parents are involved in the planning and development of local services it helps to ensure that the needs of this group are met and helps to maintain engagement with local services. It was recommended that the authority review the service offer at Hertfordshire to help benchmark local provision for young parents.

4.29 The Chair thanked Cathy Ashley for attending and to officers for the preparation of the paper and responding to members of the Commission. The Commission would prepare a summary of the key issues to emerge from the scrutiny of this session and forward conclusions and recommendations to the Cabinet member for consideration.

5 Pupil Attainment (Attainment Gap)

5.1 The Commission maintains regular oversight of pupil attainment in Hackney and this is therefore a standing item within our work programme. Children's attainment is presented at three stages for review, Early Years Foundation Stage (EYFS), Key Stage 2 (KS2) and Key Stage 4 (KS4). The aim of this item is to:

- Assess the attainment and progress of local children;
- To identify any gaps on educational attainment among different groups; and

- By extension, enquiring how HE and local schools are working to address local gaps in attainment.

5.2 The Commission reviewed a report provided by officers which provided a demographic analysis of attainment data to allow comparative assessment of pupil performance and the attainment gap between different groups of pupils. Given the Commission's ongoing interest in children who have been excluded, additional data on attainment of children in alternative provision is also included in the report.

Hackney Education

5.3 EYFS - Summary

- This was the first set of data since 2019 and the introduction of a new assessment framework for EYFS.
- It is therefore very difficult to compare results from 2022 with previous years.
- The gap between FSM children reaching a GLD in Hackney and those who don't is just 2% compared to 20% nationally.
- Although the data shows very high levels of attainment at EYFS, some groups were underperforming, particularly Black Caribbean, Black African and Turkish/Cypriot/Kurdish children.

5.4 KS2 Summary

- The overall level of performance was good at KS2, and 69% met the expected standard in reading, writing and maths, which is 10% above the national average.
- Hackney was one of the highest performing boroughs ranking 8th against all other LA's for the proportion of children reaching a GLD in reading (16th), writing (14th) and maths (9th).
- Disadvantaged children (FSM, SEND) and ethnic groups all outperformed equivalent national cohorts.

5.5 KS4 - Summary

- GCSE measures in Hackney (attainment 7, progress 8, standard pass and higher pass) exceeded national pass rates;
- $\frac{3}{4}$ of children obtained a standard pass in English and Maths;
- Local cohorts outperformed national cohorts in respect of FSM entitlement, SEND, gender and EAL.
- Areas of focus going forward included:
 - Closing the in-school attainment gap - boys, disadvantage, ethnicity and ability.
 - Use of additional funding such as pupil premium or tutoring;
 - Curriculum was key for engagement and supporting improved performance;

5.6 Alternative Provision - Summary

- Standard pass in this cohort was three times greater than the national cohort.

Questions from the Commission

5.7 Overcrowded housing, lack of study space and unequal access to other study resources all impact on levels of attainment, particularly in local Black Caribbean, Black African and Turkish/Cypriot/Kurdish communities. How is the council addressing these broader systemic issues which are underpinning lower levels of attainment within these communities?

- The authority was constantly interrogating performance data to ensure that all children achieve and to understand where to focus resources to support improvement.
- Black Caribbean, Black African and Turkish/Cypriot children were underperforming compared to their peers in Hackney and poor housing, unemployment, poverty were all factors which contributed to poorer outcomes in some of these communities. It was also apparent in the research that there were

internal educational factors which impacted on educational attainment in these communities which included low pupil expectations, ethos of the school, school leadership, parental involvement and effective local partnerships. Most importantly however, it was clear that accessibility and appropriateness of the school curriculum to these communities was critical to levels of engagement and subsequent achievement. As local results indicated, there has been a lack of progress in the attainment of some cohorts of local children and that further more effective action is necessary. In 2021, early years had focused on trauma, attachment and self-regulation to reflect the changes in the EYFS assessment. Currently, the authority has shifted focus in early years to supporting an anti-racist approach within all settings to ensure that schools have leadership and an approach that supports this and that children have access to resources which reflect the demographic makeup of the borough. It was acknowledged that this a long-term project where the results might not be visible for some time.

5.8 At every stage of attainment recorded in this report, children from Black Caribbean, Turkish and Black African record lower levels of attainment than their peers in Hackney. This is not a one off, but part of an established trend in local attainment data going back many years. Looking at the same attainment report which was presented to this Commission in 2017 (for 2016 data), it was also clear that for some groups within this cohort - educational performance levels have stagnated with attainment either falling or staying the same. What is the overarching borough strategy to close the local attainment gap and how does this intersect with council wide programmes such as the Anti-Racist Strategy and the Young Black Men's Project?

- The Director of Education responded by acknowledging that there was an attainment gap between different groups of children in Hackney, but that in comparison to national figures, the local attainment gap was not as large. The authority was not complacent and recognised that there was more to do. A summit was planned for later this year to bring together local education leaders and partners to discuss the Hackney 2030 strategy and one of the issues that will be addressed in this process is how to close the attainment gap. The authority wants to achieve excellence for all its pupils and will support schools to do so.

5.9 Parental engagement and involvement is important to children's attainment, but for those whose first language is not English this can be challenging. It was noted that many local Turkish /Kurdish/Cypriot parents do not speak English as a first language. What is Hackney Education and local schools doing to remove language barriers and to promote parental engagement in their children's education?

- The development of strong relationships with parents and the wider community is important for school attainment as this helps schools to understand the social and cultural context of pupils and the nature of disadvantage in specific communities (e.g. cultural capital, vocabulary, fear and anxiety). Ensuring that schools and local educational leaders have a developed understanding of the lived experience of children within its diverse communities was central to this approach. It is also important that this approach is reflected in aspects of the school environment. The nature of the 'additionality' was also critical in bringing change (e.g. the interpreter, catch up lessons, the cultural engagement, the curriculum).

5.10 What can Hackney learn from other local authorities which have managed to reduce their attainment gap?

- There have been a number of programmes to help address the attainment gap among Black Caribbean, Black African and Turkish/Cypriot communities. In early years, children from these communities are recruited into a reading support programme which provides daily 1-1 support. Parental workshops had also been developed in schools to support engagement. There was also a maths programme in year 5 and a reading group for years 4 and 5.

- Given the complexity of this issue and the number of factors which impact on school performance, system leadership is critical. The School Improvement Partnership had broadened its brief and approach with schools to look at these wider issues. There were entrepreneurial leaders in local schools, and it was important that Hackney Education ensured that other school leaders could learn from their approaches.

5.11 The data in the report provides an overall picture for Hackney and there is most likely there are wider variations in the performance of different cohorts of young people among the performance of local schools. Are there any schools locally where the disparities in educational performance by different ethnic groups is not so pronounced? If so, how are the approaches of these schools different and what can be learned across the local school system?

- There are many local network meetings which Hackney Education supports to help share excellent practice across local schools. Hackney Education was very keen to develop a sector led improvement approach.
- In relation to variations in school performance, the authority was moving toward a more school supporting approach and a number of primary and secondary schools were receiving help from fellow school leaders within this process.

5.12 How can the authority ensure that significant advances and improvement achieved with children in the early years stage is not lost as children progress through their schooling?

- Early years education is qualitatively different in a number of areas such as parental engagement and support and there is a real partnership of services supporting children and families at this early stage of development. It was important that parents took up their free childcare offer across early years settings as this was instrumental in improving outcomes. Currently 30% of parents do not take up 2 year old free childcare entitlement so further work is necessary. The evidence suggests that accessing 2 year old free childcare entitlement does have a positive impact on development and attainment outcomes. The take up of 3 and 4 year old entitlement is relatively high at around 90%. There was no data on the ethnicity of those not taking up childcare offers. Postcode data was available however, which would allow those not taking up the offer to be mapped.

5.13 As the attainment gap appears to get wider as children progress through their schooling, how is Hackney Education working with local academies given that most local children attend these schools for secondary education?

- The Local Authority works very effectively with local academies and representatives attend head teacher and other local network events. There were 81 schools in the local education system which all contribute differently to children's education. Academies do engage and their results do compare favourably.
- It was also noted that the secondary heads group is chaired by an academy head and a local academy is working with a local Orthodox Jewish School to share good practice and learning.

5.14 The Chair noted that there were numerous parent engagement apps which have a very positive impact, particularly as the functions and text are available in multiple community languages. How is learning from these different technologies being distributed among local schools?

- The Parental Engagement Systems leader supported a number of forums where such practice can be shared and learned across local schools. Leadership was important in parental engagement as this set the tone and context in which parents might engage. Student forums were also useful in providing feedback to the school on how well such systems were working.

- A member of the Commission also noted the importance of decentralised approach to parental engagement as this helped to engage specific groups of parents.

5.15 Noting the number of pupil movements, how does mobility impact on children's performance at school?

- In a system which prioritises parental choice and with more vacancies emerging within the education sector, there is more pupil mobility between schools. In this context, the school does need to ensure that pupils settle and adjust quickly so that they are ready to learn. There was more to be learnt around what worked best in this area and would be raised at appropriate forums.

5.16 The Chair thanked officers for attending the meeting and responding to questions from members of the Commission. The Chair welcomed the updates on the work of schools to target underperforming pupils and hoped that the report next year would demonstrate the impact of this work.

6 Work Programme

6.1 The work programme for the remainder of the municipal year was presented to the Commission. Members noted that there was one formal meeting remaining for the Commission on April 17th 2023 where there will be two substantive items.

6.1.1 Access to CAMHS

To support this item a focus group with representatives from local CAMHS services will be held on Wednesday 22nd March 2023 at 6.30 (on-line). All members of the Commission were invited to attend this focus group as it will provide an opportunity to discuss key issues about the accessibility of local CAMHS services. An outline of the session is being drafted and would be circulated to members and participants ahead of the meeting.

The focus groups will follow up visits by the Chair and Vice Chair to a number of local CAMHS settings which took place on 10th March 2023. Key issues arising from these visits will also be sent to members ahead of the focus group and the main public meeting.

6.1.2 Cabinet Q & A (Deputy Mayor Bramble)

After consulting with members, the Commission has agreed to focus on 3 areas with the Deputy Mayor:

- Quality and outcomes of Young Hackney work with schools
- Children in temporary accommodation
- Children that go missing from care, especially UASC

6.2 The Commission also noted that further updates were expected:

- Housing Support for Care Leavers - Cabinet response is now being presented at 24th April Cabinet meeting.
- Childhood Food Poverty (and Summit Outcomes) - Cabinet response on the expected toward the end of March/ early April.

7 Minutes of the Previous Meeting

7.1 The draft minutes of the meeting held on 27th February 2023 were published separately from the main agenda pack on 15th March which all members had received.

Matters Arising

Monday 20 March 2023

7.2 The Commission agreed to write to Cllr Woodley setting out the key areas of SEND provision which have emerged from local scrutiny which could be reflected in a finalised action plan. If members have issues that they wish to highlight, please email the scrutiny officer by 24th March.

7.3 Members agreed the minutes of the 27th February 2023.

8 Any Other Business

8.1 There was no other business and the meeting concluded at 9.40pm.

Duration of the meeting: Times Not Specified

This page is intentionally left blank